

N-800M 实验室生物显微镜

Laboratory Biological Microscope N-800M

- 无限远光学系统，标准的柯拉照明，提供了优越的光学品质，使得像质更好。
- 粗微调轴系低位、前置；粗微调手轮与调光手轮一手操作，效率提高；结合高稳定性的镜体机构，更合理的人机关系让使用者倍感轻松。
- With Infinite optical system, kohler illumination, providing excellent optical quality and making image perfect.
- With low and forward position coaxial focus system, focusing knobs and brightness adjustable knob within reaching location, stable integral structure, reasonable ergonomic design, making operator feel more comfortable and effective.



| | | N-800M |
|------------------------------------|--------------------------------------------------------------------------------------------------------------------------------------------------------------------------------------------------------------|--------|
| 光学系统 Optical System | 无限远光学系统 Infinite Optical System | ● |
| 观察头 Viewing Head | 倾斜式三目头，30°倾斜，瞳距 46-75mm Sedentopf Trinocular Head Inclined at 30°, Interpupillary 46-75mm | ● |
| 目镜 Eyepiece | 可变角度双目头，三目头 Tiltable Binocular/ Trinocular Head | ○ |
| 转换器 Nosepiece | 超宽视野目镜 EW10X/22, 镜筒 Φ30 Extra Wide Field Eyepiece EW10X/22, Eyepiece Tube Diameter 30mm | ● |
| 物镜 Objective | 内向式五孔转换器 Backward Quintuple Nosepiece 无限远平场消色差物镜 4X, 10X, 40X, 100X Infinite Plan Achromatic Objective 4X, 10X, 40X, 100X | ● |
| 聚光镜 Condenser | 无限远平场消色差物镜 20X, 60X Infinite Plan Achromatic Objective 20X, 60X | ● |
| 调焦系统 Focusing System | 摆出式聚光镜 NA0.9/0.25 Swing Condenser N.A.0.9/0.25 | ● |
| 载物台 Stage | 同轴粗微调机构，微调格值 0.001mm，粗动行程每圈 37.7mm，细动行程每圈 0.1mm，调焦范围 24mm Coaxial Coarse and Fine Adjustment, Fine Division 0.001mm, Coarse Stroke 37.7mm per Rotation, Fine Stroke 0.1mm per Rotation, Moving Range 24mm | ● |
| 柯拉照明 Kohler Illumination | 双层活动平台，尺寸 185X142mm，移动范围 75X55mm Double Layers Mechanical Stage 185X142mm, Moving Range 75X55mm | ● |
| 温控系统 Temperature Control System | 外挂式下照灯系统，非球面聚光器，6V/30W 卤素灯 External Illumination, Aspherical Collector, Halogen Lamp 6V/30W | ● |
| 附件 Accessories | 外挂式下照灯系统，非球面聚光器，24V/100W 卤素灯 External Illumination, Aspherical Collector, Halogen Lamp 24V/100W | ○ |
| | 3W LED 灯 3W LED Illumination | ○ |
| | 5W LED 灯 5W LED Illumination | ○ |
| | 5W LED 照明电源，温度范围：室温~50℃ 5W LED Illumination, Temperature controlling range: Room temperature to 50℃ | ○ |
| | 摄影附件 Photo Attachment | ○ |
| | 摄影接口 C 型摄影接口 C Mount 1X | ○ |
| | Video Adapter C 型摄影接口 C Mount 0.5X | ○ |
| | 偏光装置 Polarization Attachment | ○ |
| | 转盘式相位衬装置 Turret Phase Contrast Kit | ○ |
| | 暗场装置 干式暗场聚光镜 Dark-field Condenser (Dry) | ○ |
| | 暗场装置 油浸暗场聚光镜 Dark-field Condenser (Oil) | ○ |
| | FL-800 落射荧光装置 Epi-Fluorescent Attachment FL-800 | ○ |
| | FL-LED 落射荧光装置 Epi-Fluorescent Attachment FL-LED | ○ |

注：●为标准配置，○为选购配件 Note: ● Standard Outfit, ○ Optional

系统配置图 System Diagram



注：使用时该附件时显微镜倍率为40X
Viewing rate of auxiliary objective is 40X when with the accessories

实验室生物显微镜
Laboratory Biological Microscope

倒置显微镜
Inverted Microscope

正置显微镜
Upright Microscope

附件
Accessories

实验室生物显微镜
Laboratory Biological Microscope

倒置显微镜
Inverted Microscope

正置显微镜
Upright Microscope

附件
Accessories

多人观察显微镜系列 Multi-viewing Microscopes

- 多人观察显微镜可供多人共同观察同一标本。
- 拥有无限远成像系统、高亮度照明系统、LED光标指示装置及观察图像的良好一致，特别适用于临床、科研及教学讨论等应用领域。
- Multi-viewing microscopes allow people to observe specimen at the same time.
- With the features of infinite optical system, effective illumination, LED pointer and images coherence, it is widely used in clinic, scientific research and teaching demonstration.



| | | N-510 | N-306 | N-204 | N-204F |
|-----------------------------|------------------------------------------------------------------------------------------------------------------------------------------------------------------------------------------------------------------------------------------------------|-------|-------|-------|--------|
| 光学系统 Optical System | 无限远光学系统 Infinite Optical System | ● | ● | ● | ● |
| 观察头 Viewing Head | 铰链式三目头, 30°倾斜, 瞳距 48-75mm Seidentopf Trinocular Head Inclined at 30°, 360° Rotatable, Interpupillary Distance 48-75mm 铰链式双目头, 30°倾斜, 瞳距 48-75mm Seidentopf Binocular Head, Inclined at 30°, 360° Rotatable, Interpupillary Distance 48-75mm | 1PC | 1PC | 1PC | 1PC |
| 目镜 Eyepiece | 超大视场目镜 EW10X20 Extra Wide Field Eyepiece EW10X20 | 4PCS | 2PCS | 1PC | 1PC |
| 特殊器 Nosepiece | 内向式五孔特殊器 Backward Quintuple Nosepiece | ● | ● | ● | ● |
| 物镜 Objective | 无限远平场消色差物镜 4X, 10X, 40X, 100X Infinite Plan Achromatic Objective 4X, 10X, 40X, 100X | ● | ● | ● | ● |
| 聚光镜 Condenser | 摆出式聚光镜 NA0.9/0.25 Swing Condenser N.A.0.9/0.25 | ● | ● | ● | ● |
| 聚焦调节 Focusing System | 同轴粗微调机构, 微调精度 0.001mm, 粗动行程每圈 37.7mm, 微动行程每圈 0.1mm, 调焦范围 24mm Coaxial Coarse and Fine Adjustment, Fine Division 0.001mm, Coarse Stroke 37.7mm per Rotation, Fine Stroke 0.1mm per Rotation, Moving Range 24mm | ● | ● | ● | ● |
| 载物台 Stage | 双层滑动平台, 尺寸 185X142mm, 移动范围 75X55mm Double Layers Mechanical Stage 185X142mm, Moving Range 75X55mm | ● | ● | ● | ● |
| 柯勒照明 Kohler Illumination | 24V/100W 卤素灯 External Illumination, Halogen Lamp 24V/100W 5W LED 照明 5W LED Illumination | ○ | ○ | ○ | ○ |
| 示教板灯 Pointer | 绿色 LED 示教板灯, 亮度可调 Green LED Pointer, Brightness Adjustable 双色 LED 示教板灯, 亮度可调 Two Color LED Pointer, Brightness Adjustable | ● | ● | ● | ● |
| 摄影附件 Photo Attachment | | ○ | ○ | ○ | ○ |
| 摄像装置 Video Adapter | C 型接口 1X C Mount 1X C 型接口 0.5X C Mount 0.5X | ○ | ○ | ○ | ○ |

注: ●为标配, ○为选购配件 Note: ●Standard Outfit, ○Optional

XD-202 倒置生物显微镜 Inverted Biological Microscope XD-202



| | | XD-202 |
|------------------------------|----------------------------------------------------------------------------------------------------------------------------------------------------------------------------------------------------------------------------------------------------------------------|---------------------------------------------------------------------------------------------------------------|
| 光学系统 Optical System | 无限远光学系统 Infinite Optical System | ● |
| 观察头 Viewing Head | 铰链式双目头, 45°倾斜, 瞳距 48-75mm Seidentopf Binocular Viewing Head, Inclined at 45°, 360° Rotatable, Interpupillary 48-75mm | ● |
| 目镜 Eyepiece | 大视野目镜 WF10X20, 瞳距 Φ30 Wide Field Eyepiece WF10X20, Eyepiece Tube Diameter 30mm 大视野目镜 WF15X16 Wide Field Eyepiece WF15X16 大视野目镜 WF20X12 Wide Field Eyepiece WF20X12 无限远平场长工作距离物镜 4X LWD Infinite Plan Achromatic Objective 4X/0.10 WD=22 | ● ○ ○ ● |
| 物镜 Objective | 无限远平场长工作距离相衬物镜 LWD Infinite Plan Achromatic Phase Objective 相衬物镜 High-level Phase Contrast Objective 灯室调校物镜 Lamp House Adjustment Objective | 10X/0.25 WD=6 20X/0.4 WD=3.1 40X/0.55 WD=2.2 10X/0.25 WD=6 20X/0.4 WD=3.1 40X/0.55 WD=2.2 ○ |
| 特殊器 Nosepiece | 内向式五孔转换器 Backward Quintuple Nosepiece | ● |
| 聚光镜 Condenser | 超长工作距离聚光镜 NA0.3, LWD72mm, 卸下聚光镜后培养皿高度可达 150mm ELWD Condenser NA0.3/LWD72mm(without Condenser 150mm) | ● |
| 对中望远镜 Centering Telescope | 对中望远镜(镜筒 φ30mm) | ● |
| 相衬滤镜 Phase Annulus | 10X, 20X, 40X 可调心型相衬滤镜 10X, 20X, 40X Phase Annulus Plate(Adjustable) 平面载物台 230X170, Plain Stage 230X170 | ● ● ● |
| 载物台 Stage | 载物台插入面板, Glassie insert 机械移动尺, 右手低位同轴 X, Y 旋钮, 移动范围 80X120mm Attachable Mechanical Stage X, Y Coaxial Control Moving Rang 80X120mm 延长托板 Auxiliary Stage Terasaki 托架, Terasaki Holder φ38 培养皿托架 Petri Dish Holderφ38 φ54 培养皿托架 Petri Dish Holderφ54 | ● ● ● ● ● ● |
| 聚焦系统 Focusing System | 同轴粗微调机构, 微调精度 0.002mm, 调节范围向上 4.5mm, 向下 4.5mm Coaxial Coarse and Fine Adjustment, Fine Division 0.002mm, Moving Range up 4.5mm down 4.5mm | ● |
| 照明系统 Illumination | 6V/30W 卤素灯, 亮度连续可调 6V/30W Halogen Lamp, Brightness Adjustable | ● |
| 滤色镜 Filter | 蓝色、绿色、磨砂玻璃片, 直径 45mm Blue, Green and Ground Glass, Diameter 45mm | ● |
| 附件 Accessories | 摄影附件 Photo Attachment C 型接口 C Mount 0.4X 紫外荧光装置 Epi-Fluorescent Attachment 调制相衬 Modulation Contrast | ○ ○ ○ ○ |

注: ●为标配, ○为选购配件 Note: ●Standard Outfit, ○Optional

实验室生物显微镜
Laboratory Biological Micro

倒置生物显微镜
Inverted Micro

正置生物显微镜
Upright Micro

附件
Accessories

实验室生物显微镜
Laboratory Biological Micro

倒置生物显微镜
Inverted Micro

正置生物显微镜
Upright Micro

附件
Accessories

NIB-100 倒置生物显微镜

Inverted Biological Microscope NIB-100

- 无限远光学系统，提供了卓越的光学性能。
- 创新的镜体机构，清晰的标本观察，便捷的操作方式，专为细胞培养观察而量身设计，是常规检查的革新方案。
- Excellent optical function with infinite optical system.
- Innovative stand structure, sharp image display, convenient operation and special design for viewing incubating cell tissue.



FI-100 倒置荧光装置
Inverted Fluorescent Attachment

NIB-100

| | | NIB-100 |
|------------------------------------------|-------------------------------------------------------------------------------------------------------------------------------------------------------------|---------|
| 光学系统 Optical System | 无限远光学系统 Infinite Optical System | ● |
| 观察头 Viewing Head | 三目观察头，30°倾斜，瞳距调节范围 48-75mm | ● |
| 目镜 Eyepiece | 超大视野目镜 EW10X/22 Extra Wide Field Eyepiece EW10X/22 | ● |
| 物镜 Objective | 无限远平场长距物镜 10X/0.25, WD 10mm | ○ |
| | LWD Infinite Plan Objective 20X/0.4, WD 5.1mm | ○ |
| | 40X/0.6, WD 2.1mm | ○ |
| | 无限远平场相衬物镜 PH10X/0.25, WD 10 mm | ● |
| | Infinite Plan Phase Objective PH20X/0.4, WD 5.1mm | ● |
| | PH40X/0.6, WD 2.1mm | ● |
| 特殊器 Nosepiece | 五孔转换器 Quintuple Nosepiece | ● |
| 聚光镜 Condenser | 超长工作距离聚光镜 NA0.3, LWD 72mm; 卸下聚光镜后培养皿高度可达 150mm | ● |
| 对中望远镜 Centering Telescope | 对中望远镜 (镜筒Φ30MM) | ○ |
| 相衬滤镜 Phase Annulus | 10X-20X, 40X 可调心型相衬滤镜 10X-20X, 40X Phase Annulus Plate (Fixed) | ○ |
| | 10X-20X, 40X 可调心型相衬滤镜 10X-20X, 40X Phase Annulus Plate (Adjustable) | ○ |
| | 平盖载物台 160X250mm Plain Stage 160X250mm | ○ |
| | 载物台嵌入圈板 Glass Insert | ○ |
| 载物台 Stage | 机械移动尺，右手定位脚踏 X、Y 方向旋钮，移动范围 120X78mm | ○ |
| | Attachable Mechanical Stage, X-Y Coaxial Control, Moving Rang 120X78mm | ○ |
| | 延长托架 70X180mm Auxiliary Stage 70X180mm | ○ |
| | Terasaki 托架 Terasaki Holder | ○ |
| | Φ35mm 培养皿托架 Petri Dish Holder Φ35mm | ○ |
| Φ54mm 培养皿/载玻片托架 Slide Glass Holder Φ54mm | ○ | |
| Φ90mm 培养皿托架 Petri Dish Holder Φ90mm | ○ | |
| | 同轴粗微调焦机构，微调精度 0.002mm，粗动行程每圈 37.7mm，细动行程每圈 0.2mm，调焦范围上 8mm，下 3mm | ● |
| 聚焦调节 Focusing | Coaxial Coarse and Fine Adjustment, Fine Division 0.002mm, Coarse Stroke 37.7mm per Rotation, Fine Stroke 0.2mm per Rotation, Moving Range up 8mm, down 3mm | ● |
| 照明系统 Illumination | 6V/30W 卤素灯 Halogen Lamp 6V/30W | ● |
| | 3W LED | ○ |
| 滤色镜 Filter | 蓝色、绿色、磨砂玻璃片，直径 45mm Blue, Green and Ground Glass, Diameter 45mm | ● |
| 附件 Accessories | FI-100 倒置荧光装置 Inverted Fluorescent Attachment FI-100 | ○ |
| | 摄影附件 Photo Attachment | ○ |
| | 摄像标准 C 接口 Video Adapter with C Mount | ○ |

注：●为标准配置，○为选购配件 Note: ● Standard Outfit, ○ Optional

BM2100 生物显微镜

Biological Microscope BM2100

- 模块化设计，灵活多变，量身定制的显微镜构架。
- 经济实惠，更能满足您的个性需求。
- Modular, flexible, tailored design.
- Excellent cost performance, also can fits your individual needs.



可增加液晶数码屏
Extensible with Digital LCD

BM2100

| | | BM2100 |
|----------------------|-------------------------------------------------------------------------------------------------------------------------------------------------|--------|
| 光学系统 Optical System | 无限远光学系统 Infinite Optical System | ● |
| 观察头 Viewing Head | 双筒式双目头，30°倾斜，瞳距 48-75mm | ● |
| | Sedentopf Binocular Viewing Head, Inclined at 30°, 360° Rotatable, Interpupillary 48-75mm | ● |
| | 双筒式三目头，30°倾斜，瞳距 48-75mm | ○ |
| | Sedentopf Trinocular Head Inclined at 30°, Interpupillary 48-75mm | ○ |
| 目镜 Eyepiece | 大视野目镜 WF10X/22, 镜筒 Φ30 Wide Field Eyepiece EW10X/22, Eyepiece Tube Diameter 30mm | ● |
| | 大视野目镜 WF15X/16 Wide Field Eyepiece EW15X/16 | ○ |
| | 大视野目镜 WF20X/12 Wide Field Eyepiece EW20X/12 | ○ |
| 特殊器 Nosepiece | 内向外孔转换器 Backward Quintuple Nosepiece | ● |
| | 内向外四孔转换器 Backward Quadruple Nosepiece | ○ |
| 物镜 Objective | 无限远平场消色差物镜 4X, 10X, 40X, 100X Infinite Plan Achromatic Objective 4X, 10X, 40X, 100X (Oil) | ● |
| | 无限远平场消色差物镜 20X, 60X, 20X(长距物镜), 100X | ○ |
| | Infinite Plan Achromatic Objective 20X, 60X, 20X(WD14mm), 100X (Dry) | ○ |
| 聚光镜 Condenser | 阿贝聚光镜 NA1.25, 带可变光栏 | ● |
| | Abbe Condenser NA1.25 with Aperture Diaphragm | ● |
| 调焦系统 Focusing System | 同轴粗微调焦机构，微调精度 0.002mm，粗动行程每圈 37.7mm，细动行程每圈 0.2mm，调焦范围 22mm | ● |
| | Coaxial Coarse and Fine Adjustment, Fine Division 0.002mm, Coarse Stroke 37.7mm per Rotation, Fine Stroke 0.2mm per Rotation, Moving Range 22mm | ● |
| 载物台 Stage | 机械移动式载物台 230X150mm，移动范围 78X54mm，无凸出，可夹持双切片 | ● |
| | Rectangular 230X150mm, Cross Travel 78X54mm, Using Low-positioned X/Y Coaxial Control Knob | ● |
| 照明系统 Illumination | 12V/20W 卤素灯，亮度连续可调，12V/20W Halogen Lamp, Brightness Adjustable | ● |
| | 12V/30W 卤素灯，亮度连续可调，12V/30W Halogen Lamp, Brightness Adjustable | ○ |
| | LED 灯 LED Illumination | ○ |
| 附件 Accessories | 摄影附件 Photo Attachment | ○ |
| | 摄像接口 C 型摄像接口 C Mount 0.4X | ○ |
| | Video Adapter C 型摄像接口 C Mount 0.5X | ○ |
| | 偏光装置 Polarization Attachment | ○ |
| | 相衬装置 Phase Contrast Kit | ○ |
| | 暗场装置 Dark-field Attachment | ○ |
| | 干式暗场聚光镜 Dark-field Condenser (Dry) | ○ |
| | 油式暗场聚光镜 Dark-field Condenser (Oil) | ○ |
| | 柯勒照明附件 Kohler Illumination | ○ |
| | 落射荧光装置 Epi-Fluorescent Attachment | ○ |

注：●为标准配置，○为选购配件 Note: ● Standard Outfit, ○ Optional

BM2000 生物显微镜 Biological Microscope BM2000

- 采用无限远光学系统，让您感受到它与众不同的光学性能
- 完美的流线型结构设计，使操作者倍感舒适和亲切
- 插拔式可调节聚光镜，使照明更加集中、有效，便于相衬、暗场等附件更换
- Excellent image quality with infinite optical system
- Comfortable operating with ergonomic design
- Better illumination with sliding-in centerable condenser, convenient replacement with phase contrast and dark field condenser



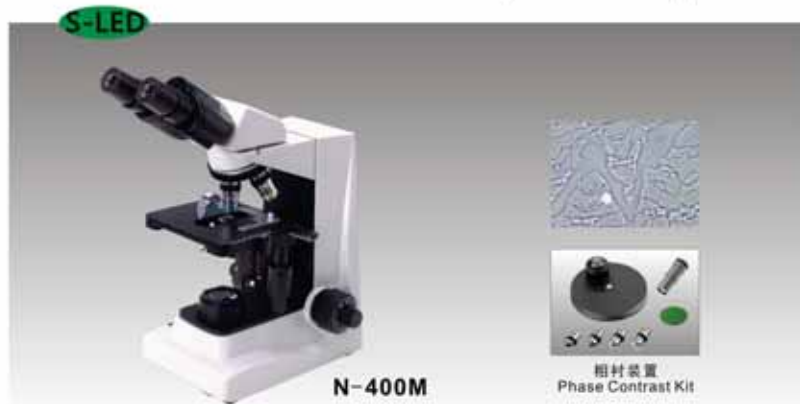
无凸出，防止划伤
Advanced structure

BM2000

| | | BM2000 |
|-------------------------|--------------------------------------------------------------------------------------------------------------------------------------------------------------------------------------------------|--------|
| 光学系统 Optical System | 无限远光学系统 Infinite Optical System | ● |
| 观察头 Viewing Head | 双目式双目头，倾斜 30°，360°可转，瞳距 48-75mm Siedentopf Binocular Viewing Head, Inclined at 30°, 360° Rotatable, Interpupillary 48-75mm | ● |
| | 三目式三目头，倾斜 30°，360°可转，瞳距 48-75mm Siedentopf Trinocular Viewing Head, Inclined at 30°, 360° Rotatable, Interpupillary 48-75mm | ○ |
| 目镜 Eyepiece | WF 10X/20 WF 15X/16 | ● ○ |
| 物镜 Objective | 无限远平场消色差物镜 4X, 10X, 40X, 100X Infinite plan Achromatic Objective 4X, 10X, 40X, 100X 无限远平场消色差物镜 20X, 60X Infinite plan Achromatic Objective 20X, 60X | ● ● |
| 特殊器 Nosepiece | 内向式四孔转换器 Backward Quadruple Nosepiece 内向式五孔转换器 Backward Quintuple Nosepiece | ● ○ |
| 调焦系统 Focusing System | 同轴粗微调焦机构，微调格值 0.002mm，粗动行程每圈 37.7mm，调焦范围 22mm Coaxial Coarse and Fine Adjustment, Fine Division 0.002mm, Coarse Stroke 37.7mm per Rotation, Fine Stroke 0.2mm per Rotation, Moving Range 22mm | ● |
| 载物台 Stage | 机械移动式载物台 230X150mm，移动范围 78X54mm，无凸出，可夹持双切片 Rectangular 230X150mm, Cross Travel 78X54mm, Using Low-positioned XY Coaxial Control Knob | ● |
| 聚光镜 Condenser | 阿贝聚光镜 NA1.25 (带孔径光阑)，可装滤色片 Abbe Condenser NA1.25 with Aperture Diaphragm | ● |
| 照明系统 Illumination | 12V/20W 卤素灯，亮度可调 12V/20W Halogen Lamp, Brightness Adjustable S-LED 照明，亮度连续可调 S-LED Illumination, Brightness Adjustable | ● ○ |
| 选购 Optional | 摄影装置，摄像装置，偏光装置，柯勒照明，相衬附件 Photo Attachment, Video Attachment, Polarization Set, Kohler Illumination, Phase Contrast Kit | ○ |

注：●为标准配置，○为选购配件 Note: ● Standard Outfit, ○ Optional

N-400M 生物显微镜 Biological Microscope N-400M



N-400M

相衬装置
Phase Contrast Kit

| | | N-400M |
|--------------------------------|---------------------------------------------------------------------------------------------------------------------------------------------------------------------------------------------------------------|--------------------------------------------------------------------------------|
| 观察头 Viewing Head | 双目式双目头，30°倾斜，360°可转，瞳距 55-75mm Siedentopf Binocular Viewing Head, Inclined at 30°, 360° Rotatable, Interpupillary 55-75mm | ● |
| | 单目头，30°倾斜，360°可转 Monocular Head, Inclined at 30°, 360° Rotatable | ○ |
| 目镜 Eyepiece | 双目式三目头，30°倾斜，360°可转，瞳距 55-75mm Siedentopf Trinocular Viewing Head, Inclined at 30°, 360° Rotatable, Interpupillary 55-75mm | ○ |
| | 大视野目镜 WF10X/18 Wide Field Eyepiece WF10X/18 大视野目镜 P16X/11 Wide Field Eyepiece P16X/11 | ● ● |
| 物镜 Objective | 消色差物镜 4X, 10X, 40X, 100X Achromatic Objective 4X, 10X, 40X, 100X 平场消色差物镜 20X, 60X Achromatic Objective 20X, 60X | ● ○ |
| | 平场消色差物镜 4X, 10X, 20X, 40X, 60X, 100X Plan Achromatic Objective 4X, 10X, 20X, 40X, 60X, 100X | ○ |
| 特殊器 Nosepiece | 内向式四孔转换器 Backward Quadruple Nosepiece 内向式五孔转换器 Backward Quintuple Nosepiece | ● ○ |
| | 载物台 Stage | 双层活动平台 140X140mm，移动范围 75X50mm Double Layers Mechanical Stage 140X140mm/75X50mm |
| 聚光镜 Condenser | 阿贝聚光镜 NA 1.25，带可变光阑和滤色片 NA 1.25 Abbe Condenser with Iris Diaphragm and Filter, Rack & Pinion Adjustment | ● |
| 调焦系统 Focusing System | 同轴粗微调焦机构，微调格值 0.002mm，粗动行程每圈 37.7mm，细动行程每圈 0.2mm，调焦范围 24mm Coaxial Coarse and Fine Adjustment, Fine Division 0.002mm, Coarse Stroke 37.7mm per Rotation, Fine Stroke 0.2mm per Rotation, Moving Range 24mm | ● |
| 照明系统 Illumination | S-LED 照明，亮度连续可调 S-LED Illumination, Brightness Adjustable 6V/20W 卤素灯，亮度连续可调 Halogen Lamp 6V/20W, Brightness Adjustable 柯勒照明装置 Kohler Illumination | ● ○ ○ |
| 摄影附件 Photo Attachment | 摄像附件 Video Attachment | ○ ○ |
| | 滤色片 Filter | 蓝色滤色片 Blue Filter 绿色滤色片 Green Filter |
| 偏光装置 Polarization Set | 简单偏光装置 Simple Polarization Set 简单相衬装置 Simple Phase Contrast Kit | ○ ○ |
| | 相衬装置 Phase Contrast Kit | 推拉式相衬装置 Sliding Phase Contrast Kit 转盘式相衬装置 Turned Phase Contrast Kit |
| 暗场装置 Dark Field Attachment | 干式暗场聚光镜 NA0.7-0.9 Dark Field Condenser (Dry) NA 0.7-0.9 油式暗场聚光镜 NA1.25-1.36 Dark Field Condenser (Oil) NA 1.25-1.36 | ○ ○ |
| 荧光装置 Fluorescent Attachment | YX-2 透射荧光装置 YX-2 Epi-fluorescent Attachment FL-LED 透射荧光装置 FL-LED Epi-fluorescent Attachment | ○ ○ |

注：●为标准配置，○为选购配件 Note: ● Standard Outfit, ○ Optional

实验室生物显微镜
Laboratory Biological Micro

倒置显微镜
Inverted Micro

正置显微镜
Upright Micro

附件
Accessories

实验室生物显微镜
Laboratory Biological Micro

倒置显微镜
Inverted Micro

正置显微镜
Upright Micro

附件
Accessories

N-300M 生物显微镜 Biological Microscope N-300M

- 无限远光学系统，提供了卓越的光学性能
- 整体流线型结构设计，使操作者倍感舒适和亲切
- 插拔式可调中聚光镜，使照明更加集中、有效，便于相衬、暗场等附件的更换。
- Excellent image quality with infinite optical system
- Comfortable operating with ergonomic structure
- Better illumination with sliding-in centerable condenser. Convenient replacement with phase contrast and dark field condenser



| | | N-300M |
|--------------------------------|---------------------------------------------------------------------------------------------------------------------------------------------------------------------------------------------------------------|--------|
| 光学系统 Optical System | 无限远光学系统 Infinite Optical System | ● |
| 观察头 Viewing Head | 铰链式双目头，30°倾斜，瞳距 48-75mm Seidentopf Binocular Viewing Head, 30° Inclined, Interpupillary 48-75mm 铰链式三目头，30°倾斜，瞳距 48-75mm Seidentopf Trinocular Viewing Head, 30° Inclined, Interpupillary 48-75mm | ● ○ |
| 目镜 Eyepiece | 大视场目镜 WF10X/18 Wide Field Eyepiece WF 10X/18 可调程度大视场平场目镜 EW10X/20 Extra Wide Field Eyepiece EW10X/20 with Diopter Adjustment | ● ○ |
| 物镜 Objective | 无限远平场消色差物镜 4X, 10X, 40X, 100X Infinite Semi-plan Achromatic Objectives 4X, 10X, 40X, 100X 无限远平场消色差物镜 4X, 10X, 40X, 100X Infinite Plan Achromatic Objectives 4X, 10X, 40X, 100X | ● ○ |
| 转换器 Nosepiece | 四孔转换器 Quadruple Nosepiece | ● |
| 载物台 Stage | 双层活动平台，载物台面 140mmX140mm 移动范围 75mmX50mm Double Layers Mechanical Stage 140mmX140mm/ 75mmX50mm | ● |
| 聚光镜 Condenser | 插入式聚光镜 NA1.25 Sliding-in Centerable condenser NA1.25 | ● |
| 调焦系统 Focusing System | 同轴粗微调焦机构，微调格值 0.002mm，粗动行程每圈 37.7mm，微动行程每圈 0.2mm，调焦范围 20mm Coaxial Coarse and Fine Adjustment, Fine Division 0.002mm, Coarse Stroke 37.7mm per Rotation, Fine Stroke 0.2mm per Rotation, Moving Range 20mm | ● |
| 照明系统 Illumination | S-LED 照明，亮度连续可调 S-LED illumination, Brightness Adjustable 6V/20W 卤素灯，亮度可调 6V/ 20W Halogen Lamp, Brightness Adjustable | ● ○ |
| 相衬附件 Phase Contrast Kit | | ○ |
| 荧光装置 Fluorescent Attachment | YX-2 透射荧光装置 YX-2 Epi-fluorescent Attachment FL-LED 透射荧光装置 FL-LED Epi-fluorescent Attachment | ○ ○ |
| 暗场装置 Dark Field Attachment | | ○ |

注：●为标准配置，○为选购配件 Note ● Standard Outfit, ○ Optional

N-300F(LED) 荧光显微镜 Fluorescent Microscope N-300F(LED)



| | | N-300F(LED) | | | | | |
|----------------------------------|-----------------------------------------------------------------------------------------------------|--------------------------------|------------------------------------------|-----------|---|--------|-------|
| 光学系统 Optical System | 无限远光学系统 Infinite optical system | ● | | | | | |
| 观察头 Viewing Head | 铰链式双目头，30°倾斜，瞳距 48-75mm Compensation free binocular head inclined at 30°, Interpupillary 48-75mm | ● | | | | | |
| 目镜 Eyepiece | WF10X/18 | ● | | | | | |
| 转换器 Nosepiece | 内向式四孔转换器 Backward quadruple nosepiece | ● | | | | | |
| 无限远物镜 Infinite Objective | 半平场消色差物镜 Semi-plan Achromatic Objective | 4X | ● | | | | |
| | | 10X | ● | | | | |
| | | 20X | ○ | | | | |
| | | 40X | ● | | | | |
| | | 100X | ● | | | | |
| | 荧光物镜 Fluorescent Objective | 4X, 10X, 20X, 40X, 100X | ○ | | | | |
| 聚光镜 Condenser | 固定式聚光镜 NA 1.25 Condenser NA 1.25 | ● | | | | | |
| 聚焦调节 Focusing | 同轴粗微调机构，微调格值 0.002mm Coaxial coarse & fine adjustment, Fine division 0.002mm | ● | | | | | |
| 载物台 Stage | 双层活动平台 140X140/75X50 Double layers mechanical stage 140X140/75X50 | ● | | | | | |
| 摄影附件 Photo Attachment | | ○ | | | | | |
| 摄像装置 Video Adapter | | ○ | | | | | |
| 照明系统 Illumination | S-LED 照明，亮度连续可调 S-LED illumination, Brightness Adjustable 6V/20W 卤素灯 Halogen lamp 6V/20W | ● | | | | | |
| | | ○ | | | | | |
| 垂直照明装置 Reflected Light Source | 激发 Excitation | 分光 Dichroic Mirror | 截止 Barrier Filter | | ● | | |
| | | | B 激发光波滤色组件 Blue Excitation | BP460-490 | | DM505 | BA515 |
| | | G 激发光波滤色组件 Green Excitation | BP510-550 | DM570 | | BA590 | ○ |
| | | 光源 Lamp | 3W LED (465-475nm) 3W LED (525-530nm) | | | ● ○ | |
| 折射率油 Immersion Oil | 无荧光油 Fluorescent free oil | | | | ● | | |

注：●为标准配置，○为选购配件 Note ● Standard Outfit, ○ Optional

实验室生物显微镜
Laboratory Biological Micro

倒置显微镜
Inverted Micro

正置显微镜
Upright Micro

附件
Accessories

实验室生物显微镜
Laboratory Biological Micro

倒置显微镜
Inverted Micro

正置显微镜
Upright Micro

附件
Accessories

N-200M 生物显微镜 Biological Microscope N-200M



| | | N-200M |
|--------------------------------|--------------------------------------------------------------------------------------------------------------------------------------------------------------------------------------------------------------------------------------------------------------------------|------------------|
| 观察头 Viewing Head | 双目式双目头, 30°倾斜, 瞳距 55-75mm Seidentopf binocular viewing head, Inclined at 30°, Interpupillary 55-75mm 三目式三目头, 30°倾斜, 瞳距 55-75mm Seidentopf Trinocular viewing head, Inclined at 30°, Interpupillary 55-75mm 单目头, 30°倾斜 Monocular Head, Inclined at 30° | ● ○ ○ |
| 目镜 Eyepiece | 大视场目镜 WF10X/18 Wide Field Eyepiece WF10X/18 大视场目镜 P16X/11 Wide Field Eyepiece P16X/11 半平场消色差物镜 4X, 10X, 40X, 100X Semi-plan Achromatic Objective 4X, 10X, 40X, 100X 平场消色差物镜 4X, 10X, 20X, 40X, 60X, 100X Plan Achromatic Objective 4X, 10X, 20X, 40X, 60X, 100X | ○ ● ● ● |
| 物镜 Objective | 半平场消色差物镜 4X, 10X, 40X, 100X Semi-plan Achromatic Objective 4X, 10X, 40X, 100X 平场消色差物镜 4X, 10X, 20X, 40X, 60X, 100X Plan Achromatic Objective 4X, 10X, 20X, 40X, 60X, 100X | ● ○ |
| 转换器 Nosepiece | 内锁式四孔转换器 Backward Quadruple Nosepiece 内锁式五孔转换器 Backward Quintuple Nosepiece | ○ ○ |
| 载物台 Stage | 双单活动平台, 尺寸 140X140mm, 移动范围 75X50mm Double Layers Mechanical Stage 140X140mm/75X50mm | ● |
| 聚光镜 Condenser | 阿贝聚光镜 NA 1.25, 带可变光栏和滤色片 NA 1.25 Abbe Condenser with Iris Diaphragm and Filter | ● |
| 调焦系统 Focusing System | 同轴粗微调焦机构, 微调格值 0.002mm, 粗动行程每圈 37.7mm, 微动行程每圈 0.2mm, 调焦范围 26mm Coaxial Coarse and Fine Adjustment, Fine Division 0.002mm, Coarse Stroke 37.7mm per Rotation, Fine Stroke 0.2mm per Rotation, Moving Range 26mm | ● |
| 照明系统 Illumination | S-LED 照明, 亮度连续可调 S-LED Illumination, Brightness Adjustable 6V/20W 卤素灯 Halogen Lamp 6V/20W, Brightness Adjustable 柯勒照明装置 Kohler Illumination | ● ○ ○ |
| 滤色片 Filter | 蓝色滤色片 Blue Filter 绿色滤色片 Green Filter | ○ ● |
| 偏光装置 Polarization Set | 简易偏光装置 Simple Polarization Set | ○ |
| 相衬装置 Phase Contrast Kit | 简易相衬装置 Simple Phase Contrast Kit 滑动式相衬装置 Sliding Phase Contrast Kit 转盘式相衬装置 Turret Phase Contrast Kit | ○ ○ ○ |
| 暗场装置 Dark Field Attachment | 干式暗场聚光镜 NA0.7-0.9 Dark Field Condenser (Dry) NA 0.7-0.9 油式暗场聚光镜 NA1.25-1.36 Dark Field Condenser (Oil) NA 1.25-1.36 | ○ ○ |
| 荧光装置 Fluorescent Attachment | YX-2 透射荧光装置 YX-2 Epi-fluorescent Attachment LED 光学指针系统 Green LED Pointer System | ○ ○ |
| 选购 Optional | 摄影装置, 摄像装置 Photo attachment, Video Attachment | ○ |

注: ●为标准配置, ○为选购配件 Note: ●Standard Outfit, ○Optional

N-180M 生物显微镜 Biological Microscope N-180M



| | | N-180M |
|--------------------------------|-------------------------------------------------------------------------------------------------------------------------------------------------------------------------------------------------------------------|-------------|
| 观察系统 Viewing Head | 双目式双目头, 30°倾斜, 瞳距 55-75mm Seidentopf Binocular Head, Inclined at 30°, Interpupillary 55-75mm 三目式三目头, 30°倾斜, 瞳距 55-75mm Seidentopf Trinocular Head, Inclined at 30°, Interpupillary 55-75mm | ● ○ |
| 目镜 Eyepiece | 大视场目镜 EW10X/20 Wide Field Eyepiece EW10X/20 大视场目镜 P16X/11 Wide Field Eyepiece P16X/11 | ● ○ |
| 物镜 Objective | 半平场消色差物镜 Semi-plan Achromatic Objective 4X, 10X, 40X, 100X 平场消色差物镜 Plan Achromatic Objective 4X, 10X, 20X, 40X, 60X, 100X 无限远平场消色差物镜 Infinite Plan Achromatic Objective 4X, 10X, 20X, 40X, 60X, 100X | ● ○ ○ |
| 转换器 Nosepiece | 内锁式四孔转换器 Backward Quadruple Nosepiece 内锁式五孔转换器 Backward Quintuple Nosepiece | ● ○ |
| 载物台 Stage | 双单活动平台 140X140mm, 移动范围 75X50mm Double Layers Mechanical Stage 140X140mm/75X50mm | ● |
| 聚光镜 Condenser | 阿贝聚光镜 NA 1.25, 带可变光栏和滤色片 NA 1.25 Abbe Condenser with Iris Diaphragms and Filter | ● |
| 调焦系统 Focusing System | 同轴粗微调焦机构, 微调格值 0.002mm, 粗动行程每圈 37.7mm, 微动行程每圈 0.2mm, 调焦范围 20mm Coaxial Coarse and Fine Adjustment, Fine Division 0.002mm, Coarse Stroke 37.7mm per Rotation, Fine Stroke 0.2mm per Rotation, Moving Range 20mm | ● |
| 照明系统 Illumination | S-LED 照明, 亮度连续可调 S-LED Illumination, Brightness Adjustable 6V/20W 卤素灯, 亮度连续可调 Halogen Lamp 6V/20W, Brightness Adjustable 柯勒照明装置 Kohler Illumination | ● ○ ○ |
| 摄影附件 Photo Attachment | | ○ |
| 摄像附件 Video Attachment | C 接口 1X C Mount 1X C 接口 0.5X C Mount 0.5X | ○ ○ |
| 滤色片 Filter | 蓝色滤色片 Blue Filter 绿色滤色片 Green Filter | ○ ● |
| 偏光装置 Polarization Set | 简易偏光装置 Simple Polarization Set | ○ |
| 相衬装置 Phase Contrast Kit | 简易相衬装置 Simple Phase Contrast Kit 滑动式相衬装置 Sliding Phase Contrast Kit 转盘式相衬装置 Turret Phase Contrast Kit | ○ ○ ○ |
| 暗场装置 Dark Field Attachment | 干式暗场聚光镜 NA0.7-0.9 Dark Field Condenser (Dry) NA 0.7-0.9 油式暗场聚光镜 NA1.25-1.36 Dark Field Condenser (Oil) NA 1.25-1.36 | ○ ○ |
| 荧光装置 Fluorescent Attachment | YX-2 透射荧光装置 YX-2 Epi-fluorescent Attachment LED 光学指针系统 LED Optical Pointer System | ○ ○ |
| 指针系统 Pointer | LED 光学指针系统 Green LED Pointer System | ○ |

注: ●为标准配置, ○为选购配件 Note: ●Standard Outfit, ○Optional

实验室生物显微镜
Laboratory Biological Micro

倒置显微镜
Inverted Micro

正置显微镜
Upright Micro

附件
Accessories

实验室生物显微镜
Laboratory Biological Micro

倒置显微镜
Inverted Micro

正置显微镜
Upright Micro

附件
Accessories

N-125 系列生物显微镜 Binocular Biological Microscope N-125 Series



| | | N-125 | N-126 |
|------------------------------------------------------------|-----------------------------------------------------------------------------------------------------------------------------------------------|-------|-------|
| 光学系统 Optical System | 无限远光学系统 Infinite Optical System | ● | ● |
| | 有限远光学系统 Finite Optical System | ● | ● |
| 目镜 Eyepiece | WF10×/18 | ● | ● |
| | WF10×/20 | ● | ● |
| 观察镜筒 Viewing Head | 单目观察头, 30° 倾斜, Monocular Head Inclined at 30° | ● | ● |
| | 铰链式双目观察镜筒, 30° 倾斜, 瞳距 47-78mm Sedentopf Binocular Viewing Head Inclined at 30°, Interpupillary 47-78mm | ● | ● |
| | 铰链式三目观察镜筒, 30° 倾斜, 瞳距 47-78mm Sedentopf Trinocular Viewing Head Inclined at 30°, Interpupillary 47-78mm | ● | ● |
| | 数码观察镜筒, 30° 倾斜, 瞳距 47-78mm, 500万像素, 支持 WiFi Digital Viewing Head Inclined at 30°, Interpupillary 47-78mm, 5M pixels, Support WiFi | ● | ● |
| | 数码液晶屏, 30° 倾斜, 瞳距 55-75mm, 500万像素, 8寸液晶屏, 安卓系统 Digital Viewing Head Inclined at 30°, Interpupillary 47-78mm, 5M pixels, 8" LCD, Android OS | ● | ● |
| 有限远消色差 物镜 Achromatic Objective | 10× N.A=0.1 WD=18 | ● | ● |
| | 40× N.A=0.25 WD=7 | ● | ● |
| | 40× N.A=0.65 WD=0.53 | ● | ● |
| | 100× N.A=1.25 WD=0.13 | ● | ● |
| 无限远半平场 物镜 Infinite Semi-Plan Achromatic Objective | 4× N.A=0.1 WD=16.6 | ● | ● |
| | 10× N.A=0.25 WD=6.8 | ● | ● |
| | 40× N.A=0.65 WD=0.43 | ● | ● |
| | 100× N.A=1.25 WD=0.13 | ● | ● |
| 转换器 Nosepiece | 内向式四孔转换器 Backward Quadruple Nosepiece | ● | ● |
| 平台 Stage | 双层活动平台, 尺寸 140×140mm, 移动范围 75×50mm Double Layers Mechanical Stage 140X140mm, Moving Range 75X50mm | ● | ● |
| | 双层活动平台, 尺寸 150×139mm, 移动范围 75×52mm, 同步带结构 Rackless Double Layers Mechanical Stage 150X139mm, Moving Range 75X52mm | ● | ● |
| 聚光镜 Condenser | 阿贝聚光镜 NA1.25 NA1.25 Abbe Condenser | ● | ● |
| | 暗场聚光镜 (干, 油) Dark Field Condenser (Dry, Oil) | ● | ● |
| 调焦系统 Focusing System | 粗微动同轴调焦, 移动 0.002mm/格, 升降范围 25mm, Coaxial Coarse and Fine Adjustment, Fine Division 0.002mm, Moving Range 25mm | ● | ● |
| | 6V/20W 卤素灯 Halogen Lamp 6V/20W | ● | ● |
| | S-LED 照明 S-LED Illumination | ● | ● |
| | S-LED 充电型 S-LED Illumination with Recharger | ● | ● |
| | 科勒照明 Kohler Illumination | ● | ● |
| | ECO 功能 ECO Function | ● | ● |
| | 反光镜 Plane-concave Mirror | ● | ● |
| 荧光附件 Fluorescent Attachment | LED 荧光照明 Fluorescent illumination, LED lamp | ● | ● |
| | 汞灯荧光照明 Fluorescent illumination, 100W HBO lamp | ● | ● |
| 偏光附件 Polarization Set | | ● | ● |
| 相衬附件 Phase Contrast Kit | | ● | ● |

注: ●为标配, ○为选配件 Note ●Standard Outfit, ○Optional

N-117M 生物显微镜 Biological Microscope N-117M



可增加数码摄像系统
Extensible with Digital Camera System

| | | N-117M |
|---------------------------------|-------------------------------------------------------------------------------------------------------------------------------------------------------------------------------------------------------------------|--------|
| 观察头 Viewing Head | 铰链式双目, 30°倾斜, 瞳距 48-75mm Sedentopf Binocular Head, Inclined at 30°, Interpupillary Distance 48-75mm | ● |
| | 铰链式三目, 30°倾斜, 瞳距 55-75mm Sedentopf Trinocular Head, Inclined at 30°, Interpupillary Distance 55-75mm | ○ |
| 目镜 Eyepiece | WF10X/18 | ● |
| | P16X/11 | ○ |
| 物镜 Objective | 消色差物镜 4X, 10X, 40X, 100X Achromatic Objective 4X, 10X, 40X, 100X | ● |
| 转换器 Nosepiece | 内向式四孔转换器 Backward Quadruple Nosepiece | ● |
| 载物台 Stage | 双层活动平台面积 132X142mm, 移动范围 75X40mm Double Layer Mechanical Stage 132X142mm/ 75X40mm | ● |
| 调焦系统 Focusing | 同轴粗微调焦机构, 微调精度 0.004mm, 粗动行程每圈 32.7mm, 微动行程每圈 0.4mm, 调焦范围 24mm Coaxial Coarse and Fine Adjustment, Fine Division 0.004mm, Coarse Stroke 32.7mm per Rotation, Fine Stroke 0.4mm per Rotation, Moving Range 24mm | ● |
| 聚光镜 Condenser | NA1.20 阿贝聚光镜带可变光栏和滤色片 Abbe NA 1.20 with Iris Diaphragm and Filter | ● |
| | NA1.25 阿贝聚光镜带可变光栏和滤色片 Abbe NA 1.25 with Iris Diaphragm and Filter | ○ |
| 照明系统 Illumination | S-LED 照明, 亮度连续可调 S-LED Illumination, Brightness Adjustable | ● |
| | 6V/20W 卤素灯照明系统, 亮度可调 Halogen Lamp 6V 20W, Brightness Adjustable | ○ |
| 相衬附件 Phase Contrast Kit | | ○ |
| 暗场附件 Dark Field Attachment | | ○ |
| 偏光装置 Polarization Attachment | | ○ |

注: ●为标配, ○为选配件 Note ●Standard Outfit, ○Optional

实验室生物显微镜
Laboratory Biological Micro
倒置显微镜
Inverted Micro
正置显微镜
Upright Micro
附件
Accessories

实验室生物显微镜
Laboratory Biological Micro
倒置显微镜
Inverted Micro
正置显微镜
Upright Micro
附件
Accessories

BM1000 生物显微镜 Biological Microscope BM1000



| | | BM1000 |
|-------------------------|---------------------------------------------------------------------------------------------------------------------------------------------------------------------------------------------------------------------------------------------------------------------|-------------|
| 观察头 Viewing Head | 铰链式双目观察头，倾角 30°，360°可转，瞳距 48-75mm Seidentopf Binocular Viewing Head, Inclined at 30°, 360° Rotatable, Interpupillary 48-75mm 铰链式三目观察头，倾角 30°，360°可转，瞳距 48-75mm Seidentopf Trinocular Viewing Head, Inclined at 30°, 360° Rotatable, Interpupillary 48-75mm | ● ○ |
| 目镜 Eyepiece | WF10X/18 WF16X/11 | ● ○ |
| 物镜 Objective | 消色差物镜 4X, 10X, 40X, 100X Achromatic Objective 4X, 10X, 40X, 100X 平场消色差物镜 4X, 10X, 40X, 100X Plan Achromatic Objective 4X, 10X, 40X, 100X 无限远平场消色差物镜 4X, 10X, 40X, 100X Infinite Plan Achromatic Objective 4X, 10X, 40X, 100X | ● ○ ○ |
| 转换器 Nosepiece | 四孔转换器 Quadruple Nosepiece | ● |
| 调焦系统 Focusing System | 同轴粗调焦机构，微调格值 0.002mm，粗动行程每圈 37.7mm，细动行程每圈 0.2mm，调焦范围 20mm Coaxial Coarse and Fine Adjustment, Fine Division 0.002mm, Coarse Stroke 37.7mm per Rotation, Fine Stroke 0.2mm per Rotation, Moving Range 20mm | ● |
| 载物台 Stage | 双层机械平台 132X142mm，移动范围 75X40mm Double Layers Mechanical Stage 132X142mm/75X40mm | ● |
| 聚光镜 Condenser | 阿贝聚光镜 NA1.25，带可变光栏 Abbe Condenser NA1.25 with Aperture Diaphragm | ● |
| 照明系统 Illumination | S-LED 照明，亮度连续可调 S-LED Illumination, Brightness Adjustable 12V/20W 卤素灯 12V/20W Halogen Lamp, Brightness Adjustable 柯勒照明 Kohler Illumination | ● ○ ○ |
| 选购 Optional | 摄影装置，摄像装置，暗场聚光镜 Photo Attachment, Video Attachment, Dark Field Condenser | ○ |

注：●为标准配置，○为选购配件 Note ● Standard Outfit, ○ Optional

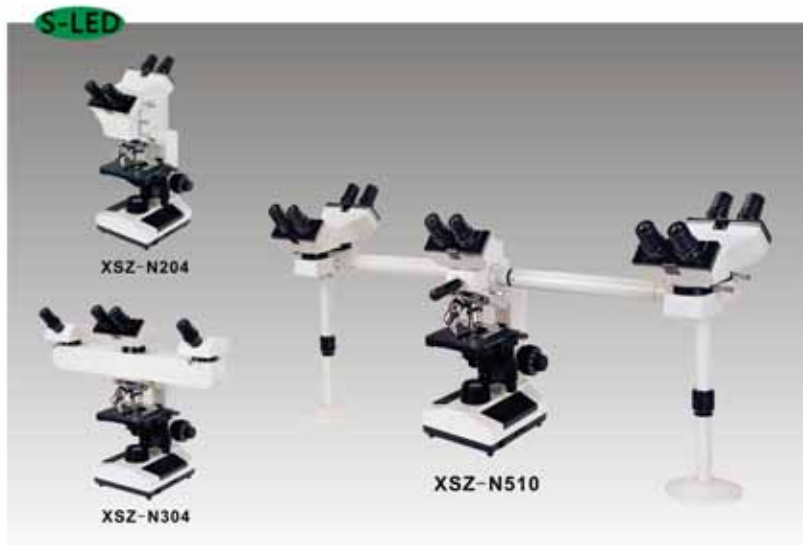
XSZ-107T 系列生物显微镜 Biological Microscope XSZ-107T Series



| | | XSZ-107T | XSZ-N107T |
|-------------------------|--------------------------------------------------------------------------------------------------------------------------------------------------------------------------------------------------------------|-------------|-------------|
| 观察头 Viewing Head | 平移式双目头 Sliding Binocular Head 平移式三目头 Sliding Trinocular Head 铰链式双目头 Seidentopf Binocular Head | ● ○ ○ | ● ○ ○ |
| 目镜 Eyepiece | WF10X P16X | ● ○ | ● ○ |
| 转换器 Nosepiece | 四孔转换器 Quadruple Nosepiece 五孔转换器 Quintuple Nosepiece | ● ○ | ● ○ |
| 物镜 Objective | 消色差物镜 4X, 10X, 40X, 100X Achromatic Objective 4X, 10X, 40X, 100X | ● | ● |
| 平台 Stage | 双层活动平台 140X140mm，移动范围 75X50mm Double Layers Mechanical Stage 140X140mm/ 75X50mm | ● | ● |
| 聚光镜 Condenser | NA1.20 阿贝聚光镜带可变光栏和滤色片 Abbe NA1.20 with Iris Diaphragm & Filter | ● | ● |
| 调焦系统 Focusing System | 同轴粗调焦机构，微调格值 0.002mm，粗动行程每圈 37.7mm，细动行程每圈 0.2mm，调焦范围 20mm Coaxial Coarse and Fine Adjustment, Fine Division 0.002mm, Coarse Stroke 37.7mm per Rotation, Fine Stroke 0.2mm per Rotation, Moving Range 20mm | ● | ● |
| 扶手板 Armrest | 黑色扶手板 Black Armrest | ○ | ● |
| 橡皮手轮套 Rubber Cover | 橡皮手轮套 Rubber Cover for Focus Adjustment Knob | ○ | ● |
| 照明系统 Illumination | S-LED 照明，亮度连续可调 S-LED Illumination, Brightness Adjustable 100V-240V/ 6V20W 卤素灯 Halogen Lamp 100V-240V/ 6V20W 平凹反光镜 Plan-concave Mirror | ● ○ ● | ● ○ ● |
| 包装 Package | 泡沫 Styrofoam 纸箱 Carton 木箱 Wooden Case | ● ● ○ | ● ● ○ |

注：●为标准配置，○为选购配件 Note ● Standard Outfit, ○ Optional

多人观察显微镜系列 Multi-viewing Microscope



| | | XSZ-N204 | XSZ-N304 | XSZ-N510 |
|-------------------------|------------------------------------------------------------------------------------------------------------------------------------------------------------------------------------------------------------------|----------|----------|----------|
| 观察头 Viewing Head | 平视式双目头、45°倾斜 Sliding Binocular Head, Inclined at 45° 单目头、45°倾斜 Monocular Head, Inclined at 45° | 2PCS | 1PC | 5PCS |
| 目镜 Eyepiece | 大视场目镜 WF10X Wide Field Eyepiece WF10X | 4PCS | 4PCS | 10PCS |
| 转换器 Nosepiece | 外向式四孔转换器 Quadruple Nosepiece | ● | ● | ● |
| 物镜 Objective | 消色差物镜 4X, 10X, 40X, 100X Achromatic Objective 4X, 10X, 40X, 100X | ● | ● | ● |
| 聚光 Condenser | 阿贝聚光镜 NA1.25 Abbe Condenser NA1.25 | ● | ● | ● |
| 聚焦调节 Focusing System | 同轴粗微调机构, 微调格值 0.002mm, 粗动行程每圈 37.7mm, 微动行程每圈 0.2mm, 调焦范围 28mm Coaxial Coarse and Fine Adjustment, Fine Division 0.002mm, Coarse Stroke 37.7mm per Rotation, Fine Stroke 0.2mm per Rotation, Moving Range 28mm | ● | ● | ● |
| 载物台 Stage | 双层活动平台, 尺寸 140X140mm, 移动范围 75X50mm Double Layers Mechanical Stage 140X140mm/ 75X50mm | ● | ● | ● |
| 照明 Illumination | S-LED 照明, 亮度连续可调 S-LED Illumination, Brightness Adjustable 6V/ 20W 卤素灯 Halogen Lamp 6V/20W 24V/ 100W 卤素灯 Halogen Lamp 24V/ 100W | ● | ● | ● |
| 示数指针 Pointer | 绿色 LED 示数指针, 亮度可调 Green LED Pointer, Brightness Adjustable | | | ● |

注: ●为标配, ○为选配件 Note: ● Standard Outfit, ○ Optional

AS1 生物显微镜 Biological Microscope AS1



| | | |
|-----------------------|--------------------------------------------------------------------------------------------------------------|---|
| AS1 | | |
| 观察系统 Viewing Head | 单目头, 45°倾斜 Monocular Head, Inclined at 45° | ● |
| 目镜 Eyepiece | WF10X/16 WF25X | ● |
| 物镜 Objective | 消色差物镜 4X Achromatic Objective 4X 消色差物镜 10X Achromatic Objective 10X 消色差物镜 40X Achromatic Objective 40X | ● |
| 聚光镜 Condenser | NA0.65 聚光镜带转盘光栏 NA0.65 with Disc Diaphragm | ● |
| 转换器 Nosepiece | 三孔转换器 Triple Nosepiece | ● |
| 载物台 Stage | 简易平台带切片压片, 尺寸 95*95mm Plain Stage with Slide Clips 95*95mm | ● |
| 照明 Illumination | 上下 LED 灯, 亮度可调, 可配 3 节 5# 电池 Up and down LED illumination | ● |
| 调焦 Focusing System | 同轴粗微调机构 Coaxial coarse and fine adjustment | ● |

注: ●为标配, ○为选配件 Note: ● Standard Outfit, ○ Optional

XSP-24N 系列生物显微镜 Biological Microscope XSP-24N Series



| | | 103 | 201 |
|----------------------|------------------------------------------------------------------------------------------------------------------------------------------------------------------------------------------------|-----|-----|
| 观察头 Viewing Head | 单目观察头, 视角 45° Monocular Viewing Head, Inclined at 45° 铰链式双目观察头, 视角 30°, 360°可转, 瞳距 55-75mm Sedentopif Binocular Viewing Head, Inclined at 30°, 360° Rotatable, Interpupillary 55-75mm | ● | ● |
| 目镜 Eyepiece | WF16X/16 WF16X/15 | ● | ● |
| 物镜 Objective | 消色差物镜 4X, 10X, 40X, 100X Achromatic Objective 4X, 10X, 40X, 100X | ● | ● |
| 转换器 Nosepiece | 四孔转换器 Quadruple Nosepiece 三孔转换器 Triple Nosepiece | ● | ○ |
| 载物台 Stage | 双层机械平台, 移动范围 60X35mm Double Layers Mechanical Stage 60X35mm 简易平台, 带切片夹 Plain Stage With Slide Clips | ● | ○ |
| 聚光镜 Condenser | 阿贝聚光镜 NA1.25, 带可变光栏 Abbe Condenser NA1.25 with Aperture Diaphragm | ● | ● |
| 照明系统 Illumination | 6V/20W 卤素灯, 亮度可调 6V/20W Halogen Lamp, Brightness Adjustable 平凹反光镜 Plan-concave Mirror | ● | ○ |

注: ●为标配, ○为选配件 Note: ● Standard Outfit, ○ Optional

N-100、N-101 系列生物显微镜 Biological Microscope N-100、N-101 Series



| | | 100A | 100C | 100B | 101A | 101C | 101B |
|-------------------------|-----------------------------------------------------------------------------------------------------------------------------------------------------------------------------------------------------------------------------------------------------------------------|------|------|------|------|------|------|
| 观察头 Viewing Head | 单目头, 45°倾斜 Monocular Head inclined at 45° 铰链式双目头, 30°倾斜 Binocular Head inclined at 30° | ● | ● | ● | ● | ● | ● |
| Head | 示教头 Teaching Head | ○ | ○ | ○ | ○ | ○ | ○ |
| 目镜 Eyepiece | 大视场目镜 WF10X/18 Wide Field Eyepiece WF10X/18 P16X/11 | ● | ● | ● | ● | ● | ● |
| 物镜 Objective | 185 物镜 4X, 10X, 40X 185 Objective 4X, 10X, 40X 185 物镜 100X 185 Objective 100X | ● | ● | ● | ● | ● | ● |
| 转换器 Nosepiece | 物镜 (DIN) 4X, 10X, 40X, 100X Objective (DIN) 4X, 10X, 40X, 100X 三孔转换器 Triple Nosepiece 四孔转换器 Quadruple Nosepiece | ● | ● | ● | ● | ● | ● |
| 载物台 Stage | 简易平台 125X120mm Plain Stage 125X120mm 平台带移动尺 110X120mm, 移动范围 60X30mm Attachable Mechanical Stage 110X120mm/ 60X30mm 双层活动平台 125X120mm Double Layer Mechanical Stage 125X120mm/60X30mm | ● | ● | ● | ● | ● | ● |
| 聚光镜 Condenser | 单片透镜带可变光栏 Single Lens with Iris 阿贝聚光镜 NA1.2, 带可变光栏和滤色片, 螺旋升降机构 Abbe NA1.2 with Iris Diaphragm, Spiral up & down 阿贝聚光镜 NA 1.2, 带可变光栏和滤色片, 齿轮齿条调整机构 Abbe NA 1.2 with Iris Diaphragm, Rack & Pinion Adjustment 分开式粗微调 Separate Coarse and Fine Adjustment | ● | ● | ● | ● | ● | ● |
| 调焦系统 Focusing System | 同轴粗微调机构, 微调格值 0.004mm, 粗动行程每圈 37.7mm, 微动行程每圈 0.4mm, 调焦范围 24mm Coaxial Coarse and Fine Adjustment, Fine Division 0.004mm, Coarse Stroke 37.7mm per Rotation, Fine Stroke 0.4mm per Rotation, Moving Range 24mm | ● | ● | ● | ● | ● | ● |
| 照明 Illumination | S-LED 照明, 亮度连续可调 S-LED Illumination, Brightness Adjustable 6V/15W 卤素灯, 亮度可调 Halogen Lamp 6V/ 15W, Brightness Adjustable | ● | ● | ● | ● | ● | ● |
| 滤色片 Filter | 平面反光镜 Plan-concave Mirror 蓝色滤色片 Blue Filter 绿色滤色片 Green Filter | ○ | ○ | ○ | ○ | ○ | ○ |

注: ●为标配, ○为选购配件 Note ● Standard Outfit, ○ Optional

XSP-103 系列生物显微镜 Biological Microscope XSP-103 Series



| | | XSP-103A | XSP-103C | XSP-103B |
|-----------------------------|-------------------------------------------------------------------------------------------------------------------------------------------------------------------------|----------|----------|----------|
| 观察头 Viewing Head | 单目头, 45°倾斜 Monocular Head, inclined at 45° 平移式双目头, 45°倾斜 Sliding Binocular Head, inclined at 45° 铰链式双目头, 30°倾斜 Seidentopf Binocular Viewing Head, inclined at 30° | ● | ● | ○ |
| 示教头 Teaching Head | 示教头 Teaching Head | ○ | ○ | ○ |
| 目镜 Eyepiece | 大视场目镜 WF10X/18 Wide Field Eyepiece WF10X/18 大视场目镜 P16X/11 Wide Field Eyepiece P16X/11 | ● | ● | ○ |
| 物镜 Objective | 消色差物镜 4X, 10X, 40X Achromatic 4X, 10X, 40X 消色差物镜 4X, 10X, 40X, 100X Achromatic 4X, 10X, 40X, 100X | ● | ● | ● |
| 转换器 Nosepiece | 三孔转换器 Triple Nosepiece 四孔转换器 Quadruple Nosepiece | ● | ● | ● |
| 载物台 Stage | 简易平台带切片压片 Plain Stage with Slide Clips, 120X130mm 平台带移动尺 110X120mm, 移动范围 60X30mm Attachable Mechanical Stage 110X120mm/ 60X30mm | ● | ● | ● |
| 聚光镜 Condenser | 单片聚光镜带特盘式光栏 Single Lens with Disc Diaphragm 阿贝聚光镜 NA1.2, 带可变光栏和滤色片 Abbe NA1.2 with Iris Diaphragm and Filter | ● | ● | ● |
| 照明系统 Illumination system | LED 照明, 亮度连续可调 LED Illumination, Brightness Adjustable 6V/20W 卤素灯 Halogen Lamp 6V/ 20W | ● | ● | ○ |
| 滤色片 Filter | 平面反光镜 Plan-concave Mirror 蓝色滤色片 Blue Filter 绿色滤色片 Green Filter | ● | ● | ○ |
| 手提袋 Case | PVC 手提袋 PVC Carrying Case | ○ | ○ | ○ |
| 包装 Package | 泡沫 Styrofoam 纸箱 Carton 木箱 Wooden Case | ● | ● | ● |

注: ●为标配, ○为选购配件 Note ● Standard Outfit, ○ Optional

实验室生物显微镜
Laboratory Biological Microscope

倒置显微镜
Inverted Microscope

正置显微镜
Upright Microscope

附件
Accessories

实验室生物显微镜
Laboratory Biological Microscope

倒置显微镜
Inverted Microscope

正置显微镜
Upright Microscope

附件
Accessories

XSP-102 系列生物显微镜 Biological Microscope XSP-102 Series



| | | XSP-102M | XSP-102A | XSP-102B |
|----------------------|---------------------------------------------------------------------------------------------------------------------------------------------|----------|----------|----------|
| 观察头 Viewing Head | 单目头, 45°倾斜, 360°可转 Monocular Head, Inclined at 45°, 360° Rotatable | ● | ● | ● |
| 目镜 Eyepiece | 大视场目镜 WF10X/18 Wide Field Eyepiece WF10X/18 大视场目镜 P16X/11 Wide Field Eyepiece P16X/11 | ● | ● | ● |
| 物镜 Objective | 消色差物镜 4X, 10X, 40X(S) Achromatic DIN 4X, 10X, 40X(S) 消色差物镜 4X, 10X, 40X(S), 100X(S, Oil) Achromatic DIN 4X, 10X, 40X(S), 100X(S, Oil) | ● | ● | ● |
| 转换器 Nosepiece | 三孔转换器 Triple Nosepiece 四孔转换器 Quadruple Nosepiece | ● | ● | ● |
| 平台 Stage | 简易平台带切片压片 120X130mm Plain Stage with Slide Clips 120X130mm 平台带移动尺 110X120mm/60X30mm Attachable Mechanical Stage 110X120mm/60X30mm | ● | ● | ● |
| 聚光镜 Condenser | 单片聚光镜带转盘式光栏 Single Lens with Disc Diaphragm NA 1.2 阿贝聚光镜带可变光栏和滤色片 Abbe NA 1.2 with Iris Diaphragm and Filter | ● | ● | ● |
| 照明系统 Illumination | 平凹反光镜 Plan-concave Mirror 内置式光源, 白炽灯 110V 或 220V/15W Built-in Illumination, Incandescent Lamp 110V/220V/15W | ● | ○ | ○ |

注: ●为标准配置, ○为选购配件 Note: ●Standard Outfit, ○Optional

N-10 系列生物显微镜 Biological Microscope N-10 Series



可增加数码摄像系统
Extensible with Digital Camera System

| | | 10B | 10C | 10D | 10E |
|-------------------------|---------------------------------------------------------------------------------------------------------------------------------------------------------------------------------------------------------------------------------------------------------------------|-----|-----|-----|-----|
| 观察系统 Viewing Head | 单目头, 45°倾斜 Monocular Head, Inclined at 45° 平移式双目头, 45°倾斜 Sliding Binocular Head, Inclined at 45° | ● | ● | ● | ● |
| 转换器 Nosepiece | 三孔转换器 Triple Nosepiece 四孔转换器 Quadruple Nosepiece | ● | ● | ● | ● |
| 目镜 Eyepiece | 大视场目镜 WF10X Wide Field Eyepiece WF10X 目镜 WF5X, P16X Eyepiece WF 5X, P16X 指针目镜 WF10X Eyepiece WF10X with Pointer | ● | ● | ● | ● |
| 物镜 Objective | 消色差物镜 4X, 10X, 40X(S) Achromatic Objective 4X, 10X, 40X(S) 消色差物镜 20X, 60X Achromatic Objective 20X, 60X 消色差物镜 100X Achromatic Objective 100X | ● | ● | ● | ● |
| 平台 Stage | 简易平台带切片压片, 平台尺寸 110X120mm Plain Stage with Slide Clips 110X120mm 简易平台加移动尺, 尺寸 110X120mm, 移动范围 60X30mm Attachable Mechanical Stag 110X120mm/60X30mm 双层活动平台, 尺寸 110X120mm, 移动范围 70X20mm Double Layers Mechanical Stage 110X120mm/70X20mm | ● | ● | ● | ● |
| 调焦系统 Focusing System | 同轴粗微调机构, 调节范围 10mm Coaxial Coarse and Fine Adjustment, Moving Range 10mm | ● | ● | ● | ● |
| 聚光镜 Condenser | NA 0.65 聚光镜带可变光栏 Single Lens NA 0.65 with Iris Diaphragm NA 1.2 阿贝聚光镜带可变光栏, 螺旋升降机构 Abbe NA 1.2 with Iris Diaphragm, Spiral Adjustment for Condenser NA 1.2 阿贝聚光镜带可变光栏, 燕尾升降机构 Abbe NA 1.2 with Iris Diaphragm, Rack and Pinion Adjustment for Condenser | ● | ● | ● | ● |
| 照明 Illumination | LED 照明, 亮度可调 LED Lamp Illumination, Brightness Adjustable | ● | ● | ● | ● |
| 反光镜 Mirror | | ○ | ○ | ○ | ○ |

注: ●为标准配置, ○为选购配件 Note: ●Standard Outfit, ○Optional

实验室生物显微镜
Laboratory Biological Micro

倒置显微镜
Inverted Micro

正置显微镜
Upright Micro

附件
Accessories

实验室生物显微镜
Laboratory Biological Micro

倒置显微镜
Inverted Micro

正置显微镜
Upright Micro

附件
Accessories

XSZ-104, XSP-105生物显微镜 Biological Microscope XSZ-104, XSP-105



| | | XSP-105A | XSP-105B | XSZ-104 |
|----------------------|---------------------------------------------------------------------------------|----------|----------|---------|
| 目镜 Eyepiece | 惠更斯目镜 H5X, H10X Huggens Eyepiece H5X, H10X | ● | ● | ● |
| | 惠更斯目镜 H12.5X Huggens Eyepiece H12.5X | ● | | |
| | 惠更斯目镜 H16X Huggens Eyepiece H16X | | ● | ● |
| 物镜 Objective | 消色差物镜 10X, 40X Achromatic Objective 10X, 40X | ● | ● | ● |
| | 消色差物镜 4X, 60X Achromatic Objective 4X, 60X | ○ | ○ | ○ |
| | 消色差物镜 100X Achromatic Objective 100X | ○ | ○ | ● |
| 转换器 Nosepiece | 三孔转换器 Triple Nosepiece | ● | ● | ● |
| 载物台 Stage | 简易平台带切片压片 110X120mm Plain Stage with Slide Clips 110X120mm | ● | ● | |
| | 平台带移动尺 110X120mm, 移动范围 60X30mm Attachable Mechanical Stage 110X120mm/60X30mm | ○ | ○ | ● |
| | 转盘式光栏 Disc Diaphragm | ● | | |
| 聚光镜 Condenser | 可变光栏 Iris Diaphragm | | ● | |
| | 阿贝聚光镜带可变光栏和滤色片 Abbe with Iris Diaphragm and Filter | | | ● |
| 照明系统 Illumination | 平凹反光镜 Plan-concave Mirror | ● | ● | ● |
| | 插入式光源 Attachable Illuminator | ○ | ○ | ○ |
| 滤色片 Filter | 蓝色滤色片 Blue Filter | | | ● |
| | 绿色滤色片 Green Filter | | | ● |

注：●为标准配置，○为选购配件 Note ● Standard Outfit, ○ Optional

YX-2 荧光附件 Fluorescent Attachment YX-2

- 落射荧光装置可以灵活与普通显微镜相结合组成荧光显微镜，了观察高质量的荧光像。
- 荧光电源宽电压、宽频率、恒功率，可适应OSRAM, USHIO等100W汞灯灯泡。
- 荧光电源稳定可靠，可做CE认证。
- 适用于荧光显微术及普通镜检，能广泛应用于性病及免疫疾病诊断。
- The epi-fluorescent attachment can be flexibly equipped with ordinary microscope to be an epi-fluorescent microscope.
- Fluorescence power source, wide range of voltage, wide range of frequencies, constant power that could adapt 100W mercury light bulb such as OSRAM, USH10 etc.
- Fluorescence power source is stable and reliable. CE marking could be obtained for it.
- It is suited for fluorescent microscopy and widely used in venereal disease examination and immuneless diagnosis.



| | | YX-2B |
|----------------------------------------------|-------------------------------------------------------------------------------------------------------------------|-------------------------------|
| 荧光垂直照明装置 Epi-Fluorescent Illumination | B (蓝), G(绿)激发光波滤色系统和 O 普通光系统 B(Blue), G(Green) Exciting Light Filter System O Ordinary Light System | ● |
| | U (紫外), V (紫) 激发光波滤色系统和 O 普通光系统 U(Ultraviolet), V(Violet) Exciting Light Filter System O Ordinary Light System | ○ |
| 照明系统 Illumination | 100WHBO 超高压球形汞灯光源 100WHBO Ultra Hi-voltage Spherical Mercury Lamp | ● |
| 观察护目屏 Protection Barrier | 防紫外挡板 Barrier to Resist the Ultraviolet Light | ● |
| 电源 Power | 电源箱 NFP-1 型 Power Supplier NFP-1. | ● |
| 物镜 (荧光装置用) Fluorescence Free Objective | 4X, 10X, 40X(弹簧), 100(弹簧,油) 4X, 10X, 40X(S), 100(S, Oil) | ● |
| | 折射率油 Immersion Oil | 无荧光油 Fluorescence Free Oil |

注：●为标准配置，○为选购配件 Note ● Standard Outfit, ○ Optional

实验室生物显微镜
Laboratory Biological Micro

倒置显微镜
Inverted Micro

正置显微镜
Upright Micro

附件
Accessories

实验室生物显微镜
Laboratory Biological Micro

倒置显微镜
Inverted Micro

正置显微镜
Upright Micro

附件
Accessories

附件 Accessories

有限远物镜系列 Finite Objective Series



各种消色差物镜
Various Achromatic Objectives



各种半平场物镜
Various Semi-plan Achromatic Objectives



各种平场物镜
Various Plan Achromatic Objectives

实验室生物显微镜
Laboratory Biological Micro

倒置显微镜
Inverted Micro

正置显微镜
Upright Micro

附件
Accessories

附件 Accessories

| | | 放大倍数 Model | 数值孔径 NA | 工作距离 W.D. | 盖玻片厚度 Cover glass thickness | 浸没介质 Immersion | 弹簧 Spring loaded | 荧光 Fluorescence | 相衬 Phase contrast | 偏光 Polarizing |
|----------------------------------|---------------------------------------------------|---------------|------------|--------------|--------------------------------|-------------------|---------------------|--------------------|----------------------|------------------|
| 有限远 物镜 Finite Objective | 消色差物镜 Achromatic Objective | 4X | 0.10 | 18 | 0.17 | | | ✓ | | |
| | | 10X | 0.25 | 7 | 0.17 | | | ✓ | ✓ | |
| | | 20X | 0.40 | 0.55 | 0.17 | | | ✓ | ✓ | |
| | | 40X | 0.65 | 0.53 | 0.17 | | | ✓ | ✓ | |
| | | 60X | 0.85 | 0.13 | 0.17 | | | ✓ | | |
| | | 100X | 1.25 | 0.13 | 0.17 | Oil | ✓ | ✓ | ✓ | |
| | 半平场 消色差物镜 S-plan Achromatic Objective | 4X | 0.10 | 20.9 | 0.17 | | | | | ✓ |
| | | 10X | 0.25 | 6.34 | 0.17 | | | | | ✓ |
| | | 25X | 0.40 | 0.82 | 0.17 | | | | | ✓ |
| | | 40X | 0.65 | 0.48 | 0.17 | | | | | ✓ |
| | | 60X | 0.85 | 0.085 | 0.17 | | | | | ✓ |
| | | 100X | 1.25 | 0.13 | 0.17 | Oil | ✓ | | | |
| | 平场消色差 物镜 Plan Achromatic Objective | 1X | 0.025 | 23 | — | | | | | |
| | | 4X | 0.10 | 15.8 | 0.17 | | | | | |
| | | 5X | 0.12 | 17.5 | — | | | | | |
| | | 10X | 0.25 | 12.2 | 0.17 | | | | | ✓ |
| | | 20X | 0.40 | 5 | 0.17 | | | | | ✓ |
| | | 40X | 0.65 | 0.65 | 0.17 | | | ✓ | | ✓ |
| 60X | | 0.80 | 0.13 | 0.17 | | | ✓ | | | |
| 100X | | 1.25 | 0.18 | 0.17 | Oil | ✓ | | ✓ | | |
| 4X | | 0.10 | 15 | 0.17 | | | | | ✓ | |
| 10X | | 0.25 | 1.54 | 0.17 | | | | | ✓ | |
| 25X | 0.40 | 1.10 | 0.17 | | | | | ✓ | | |
| 40X | 0.65 | 0.25 | 0.17 | | | | | ✓ | | |
| 63X | 0.85 | 0.18 | 0.17 | | | | | ✓ | | |

实验室生物显微镜
Laboratory Biological Micro

倒置显微镜
Inverted Micro

正置显微镜
Upright Micro

附件
Accessories

附件 Accessories

无限远物镜系列 Infinite Objective Series



各种半平场物镜
Various Semi-plan Achromatic Objectives



各种平场物镜
Various Plan Achromatic Objectives

| | | 放大倍数 Model | 数值孔径 NA | 工作距离 W.D. | 盖玻片厚度 Cover glass thickness | 浸渍介质 Immersion | 弹簧 Spring loaded | 荧光 Fluorescence | 相衬 Phase contrast | |
|-----------------------------------|-----------------------------------------|-------------------------------------------------------|------------|--------------|--------------------------------|-------------------|---------------------|--------------------|----------------------|---|
| 无限远物镜 Infinite Objective | 半平场消色差物镜 S-plan Achromatic Objective | 4X | 0.10 | 28 | — | | | | | |
| | | 10X | 0.25 | 5.8 | 0.17 | | | | | |
| | | 40X | 0.65 | 0.43 | 0.17 | | √ | | | |
| | | 100X | 1.25 | 0.13 | 0.17 | Oil | √ | | | |
| | 平场消色差物镜 Plan Achromatic Objective | 2X | 0.05 | 18.3 | — | | | | | |
| | | 4X | 0.10 | 28 | — | | | | | |
| | | 5X | 0.12 | 15.4 | — | | | | | |
| | | 10X | 0.25 | 10 | 0.17 | | | | √ | |
| | | 20X | 0.40 | 5.1 | 0.17 | | | | √ | |
| | | 40X | 0.65 | 0.7 | 0.17 | | √ | | √ | |
| | 无限远物镜 Infinite Objective | 倒置生物物镜 Objective for Inverted Micro | 60X | 0.80 | 0.14 | 0.17 | | √ | | |
| | | | 100X | 1.25 | 0.18 | 0.17 | Oil | √ | | √ |
| | | | 4X | 0.10 | 28 | — | | | | |
| | | | 10X | 0.25 | 10 | 1.2 | | | | |
| | 管镜 f=180 | 实验室荧光物镜 Fluorescent Objective for Laboratory Micro | 20X | 0.40 | 5.1 | 1.2 | | | | |
| | | | 40X | 0.60 | 2.1 | 1.2 | | √ | | |
| | | | 4X | 0.13 | 16.3 | — | | | | |
| | | | 10X | 0.30 | 12.4 | 0.17 | | | | |
| | | 倒置荧光物镜 Fluorescent Objective for Inverted Micro | 20X | 0.50 | 1.5 | 0.17 | | √ | | |
| | | | 40X | 0.75 | 0.35 | 0.17 | | √ | | |
| 100X | | | 1.30 | 0.13 | 0.17 | Oil | √ | | | |
| 4X | | | 0.13 | 16.3 | 1.2 | | | | | |
| 平场半复消色差物镜 Plan S-Apo Objective | | 10X | 0.30 | 8.1 | — | | | √ | | |
| | | 20X | 0.50 | 2.1 | 0.17 | | | √ | | |
| | | 40X | 0.75 | 0.7 | 0.17 | | √ | √ | | |
| | | 100X | 1.30 | 0.16 | 0.17 | Oil | √ | √ | | |
| 无限远物镜 Infinite Objective | 半平场消色差物镜 S-plan Achromatic Objective | 4X | 0.10 | 15.5 | 0.17 | | | | | |
| | | 10X | 0.25 | 5.02 | 0.17 | | | | | |
| | | 10X | 0.25 | 5.02 | 0.17 | | | | √ | |
| | | 20X | 0.40 | 0.81 | 0.17 | | | | | |
| | 管镜 f=150 | 40X | 0.65 | 0.60 | 0.17 | | | | √ | |
| | | 40X | 0.65 | 0.60 | 0.17 | | | | √ | |
| | | 60X | 0.80 | 0.27 | 0.17 | | √ | | | |
| | | 100X | 1.25 | 0.13 | 0.17 | Oil | √ | | | |
| 无限远物镜 Infinite Objective | 平场消色差物镜 Plan Achromatic Objective | 100X | 1.25 | 0.13 | 0.17 | Oil | √ | | √ | |
| | | 4X | 0.10 | 22.2 | 1.20 | | | | | |
| | | 4X | 0.10 | 25.2 | 0.17 | | | | | |
| | | 10X | 0.25 | 8.1 | 1.20 | | | | | |
| | | 10X | 0.25 | 7.0 | 0.17 | | | | | |
| | | 10X | 0.25 | 7.0 | 0.17 | | | | √ | |
| | | 20X | 0.40 | 3.0 | 1.20 | | | | | |
| | | 20X | 0.40 | 6.4 | 0.17 | | | | | |
| | 管镜 f=200 | 40X | 0.55 | 1.9 | 1.20 | | | | | |
| | | 40X | 0.65 | 0.6 | 0.17 | | | | | |
| | | 40X | 0.65 | 0.6 | 0.17 | | | | √ | |
| | | 60X | 0.80 | 0.3 | 0.17 | | √ | | | |
| | | 100X | 1.25 | 0.16 | 0.17 | Oil | √ | | | |
| | | 100X | 1.25 | 0.16 | 0.17 | Oil | √ | √ | | |

附件 Accessories

目镜系列 Condensor Series



各种惠更斯目镜
Various Hygens Eyepieces



各种平场目镜
Various Plan Eyepieces



各种大视场目镜
Various Wide Field Eyepieces



各种可调程度目镜
Various Wide Field Eyepieces with Diopter Adjustment



各种对中型望远镜
Various Centering Telescopes

| | 倍数 Model | 焦距 F | 视场 Field | 分划板* Reticule* | 目镜筒尺寸 Size of eyepiece tube | |
|--------------------------------------------------|-------------|---------|-------------|-------------------|-----------------------------------|-------|
| 惠更斯目镜 Hygens Eyepieces | 5X | 48.979 | Φ20 | | Φ23.2h8 | |
| | 10X | 24.999 | Φ14 | | Φ23.2h8 | |
| | 16X | 15.624 | Φ10 | | Φ23.2h8 | |
| 平场目镜 Plan Eyepieces | 8X | 31.25 | Φ18 | | Φ23.2h8 | |
| | 10X | 25 | Φ18 | ✓ | Φ23.2h8 | |
| | 16X | 15.58 | Φ11 | ✓ | Φ23.2h8 | |
| | 20X | 12.5 | Φ9.5 | ✓ | Φ23.2h8 | |
| | 25X | 10 | Φ8 | | Φ23.2h8 | |
| 大视场 目镜 Wide Field Eyepieces | 30X | 8.33 | Φ6 | | Φ23.2h8 | |
| | 10X | 25 | Φ20 | ✓ | Φ23.2h8 | |
| | 10X | 25 | Φ22 | ✓ | Φ30h8 | |
| | 12.5X | 20 | Φ17.5 | | Φ30h8 | |
| | 15X | 16.66 | Φ16 | | Φ23.2h8 | |
| 可调程度 目镜 Diopter Adjustment Eyepieces | 10X | 25 | Φ18 | ✓ | Φ23.2h8 | |
| | | | Φ20 | ✓ | Φ30h8 | |
| | | | Φ22 | ✓ | Φ30h8 | |
| | 15X | 16.6 | Φ16 | Φ24 | | Φ30h8 |
| | | | | Φ12 | ✓ | Φ30h8 |
| 对中型望远镜 Centering Telescopes | 30X | 8.3 | Φ8 | | Φ30h8 | |
| | 10X | 25 | Φ18 | | Φ23.2h8 | |
| | 10X | 25 | Φ20 | | Φ30h8 | |

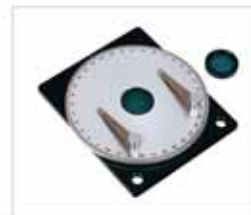
注：✓为选购配件 Note: ✓ Optional

附件 Accessories

偏光附件 Polarization Set



简易偏光附件
Simple Polarization Set



简易偏光平台
Simple Polarization Stage

荧光附件 Fluorescent Attachment



倒置荧光装置
Inverted Fluorescent Attachment



正置荧光装置
Upright Fluorescent Attachment

其他附件 Others



描绘附件
Drawing Attachment



温控平台
Temperature Controlled Stage

附件 Accessories

聚光镜系列 Condensor Series



明场聚光镜系列(插入式)
Bright Field Condenser Series (Insert)



明场聚光镜系列(套入式)
Bright Field Condenser Series (Invaginate)



相衬聚光镜系列(套入式)
Phase Contrast Condenser Series (Invaginate)



相衬聚光镜系列(插入式)
Phase Contrast Condenser Series (Insert)



暗场聚光镜系列(套入式)
Dark Field Condenser Series (Invaginate)



暗场聚光镜系列(插入式)
Dark Field Condenser Series (Insert)

附件 Accessories

其他附件 Others



各种单目观察头
Various Monocular Viewing Heads



各种双目观察头
Various Binocular Viewing Heads



各种三目观察头
Various Trinocular Viewing Heads



各种物镜转换器
Various Nosepieces for Objectives



简装平台带移动尺
Plain Stage with Attachable Stage



各种集光镜
Various Collector



各种柯勒照明部件
Various Kohler Illumination Sets



各种C型接口摄像接头
Various Video Adapter with C Mount



双层活动平台
Double Layers Mechanical Stage



各种双层活动平台带双切片夹
Various Double Layers Mechanical Stage with Dual Slides Finger

NSZ-608T 系列连续变倍体视显微镜 Zoom Stereo Microscope NSZ-608T Series

性能

- 同级别中领先的机型，变比值 1:8.3，变焦范围 0.6X-5X，可进行广范围的观察，视野宽广，最大可达 $\Phi 76\text{mm}$ 。
- 高性能光学部件，可形成清晰的高对比度图像，三目摄像无重像。
- 符合人机工程学设计，可减轻长时间观察而产生的疲劳。
- 品种齐全的目镜和辅助物镜，丰富的附件可满足各项功能的扩展，特别适合工业组装和检验，以及教学和基础研究。

Features

- The leading role of the same level microscopes, wide range observation with zoom range 0.6X-5X, zoom ratio 1:8.3 and visual field up to $\Phi 76\text{mm}$.
- With high quality optical components, providing sharp and striking contrast image and no ghost image.
- Ease the tiredness with ergonomic design.
- With Complete eyepieces, auxiliary objectives and other accessories, it is an ideal instrument for industry assembling, inspection and leaching field.



技术参数 Specification

| | | NSZ-608T(A) | NSZ-608T(B) |
|------------------------------------------|---------------------------------------------------------|-------------|-------------|
| 观察镜筒 Viewing Tube | 三目体视镜体，倾角 30° Trinocular viewing head, inclined at 30° | ● | ● |
| 视度可调目镜 Diopter Adjustment Eyepiece | 大视场平场目镜 WF10X/Φ23 | ● | ● |
| | WF15X/Φ16 | ○ | ○ |
| 变倍物镜 Zoom Objective | WF20X/Φ12 | ○ | ○ |
| | WF30X/Φ8 | ○ | ○ |
| | 0.6X-5X | ● | ● |
| 变倍比 Zoom Ratio | 1:8.3 | ● | ● |
| 工作距离 Working Distance | 115mm | ● | ● |
| 瞳距 Interpupillary Distance | 55-75mm | ● | ● |
| 辅助物镜 Auxiliary objective | 0.5X WD: 220mm | ○ | ○ |
| | 0.7X WD: 125mm | ○ | ○ |
| | 2X WD: 45mm | ○ | ○ |
| | 0.5X C 接口 0.55X C Mount | ● | ● |
| 载物台插入面板 Stage Insert | 直径 125mm 透明玻璃盘 Glass plate, Diameter 125mm | ● | ● |
| | 直径 100mm 透明玻璃盘 Glass plate, Diameter 100mm | ○ | ○ |
| | 直径 125mm 黑白板 Opal & black acrylic plate, Diameter 125mm | ● | ● |
| | 直径 100mm 黑白板 Opal & black acrylic plate, Diameter 100mm | ○ | ○ |
| 调焦行程 Focusing Range | 105mm | ● | ● |
| 光源 Illumination | 反射光照明 100V-240V/LED Incident illumination 100V-240V/LED | ● | ● |
| | 透射光照明 100V-240V/LED | ● | ● |
| | Transmitted illumination 100V-240V/LED | ● | ● |
| 摄像适配器 Video Adapter | 0.55X C 接口 0.55X C Mount | ● | ● |
| | 1X C 接口 1X C Mount | ○ | ○ |

注：●为标配，○为选购配件 Note: ● Standard Outfit, ○ Optional

系统配置图 System Diagram



注：* 表示与 NSZ-F1, NSZ-F4 相连接时需取下该件
Note: * Take away the connecting column of NSZ-F1 and NSZ-F4.

体视显微镜
Stereo Micro

宝石显微镜
Gem Micro

单筒连续变倍显微镜
Monocular Zoom Micro

金相显微镜
Metallograph Micro

偏光显微镜
Polarizing Micro

便携式测量显微镜
Portable Measuring Micro

附件
Attachment

体视显微镜
Stereo Micro

宝石显微镜
Gem Micro

单筒连续变倍显微镜
Monocular Zoom Micro

金相显微镜
Metallograph Micro

偏光显微镜
Polarizing Micro

便携式测量显微镜
Portable Measuring Micro

附件
Attachment

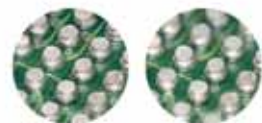
JSZ8系列连续变倍体视显微镜 Zoom Stereo Microscope JSZ8 Series

性能

- 同级别中领先的机型，变焦范围0.6X-5X可进行广范围的观察，视野宽广，最大可达Φ76mm。
- 高性能光学部件，可形成清晰的高对比度图像，并确保大景深下图像的平整度。
- 符合人机工程学设计，可减轻长时间观察而产生的疲劳。
- 品种齐全的目镜和辅助物镜，丰富的附件可满足各项功能的扩展，特别适合工业组装和检验，以及教学和基础研究。

Features

- The leading roles of same level microscope, wide range observation with zoom range 0.6X-5X and visual field up to Φ76mm.
- With high quality optical components, providing sharp and striking contrast image and ensure flat image at large depth of field.
- Ease the tiredness with ergonomic design.
- With Complete eyepieces, objectives and accessories, it is an ideal instrument for industry assembling, inspection and teaching field.



JSZ8 其他 Others
大景深 Large Depth of Field

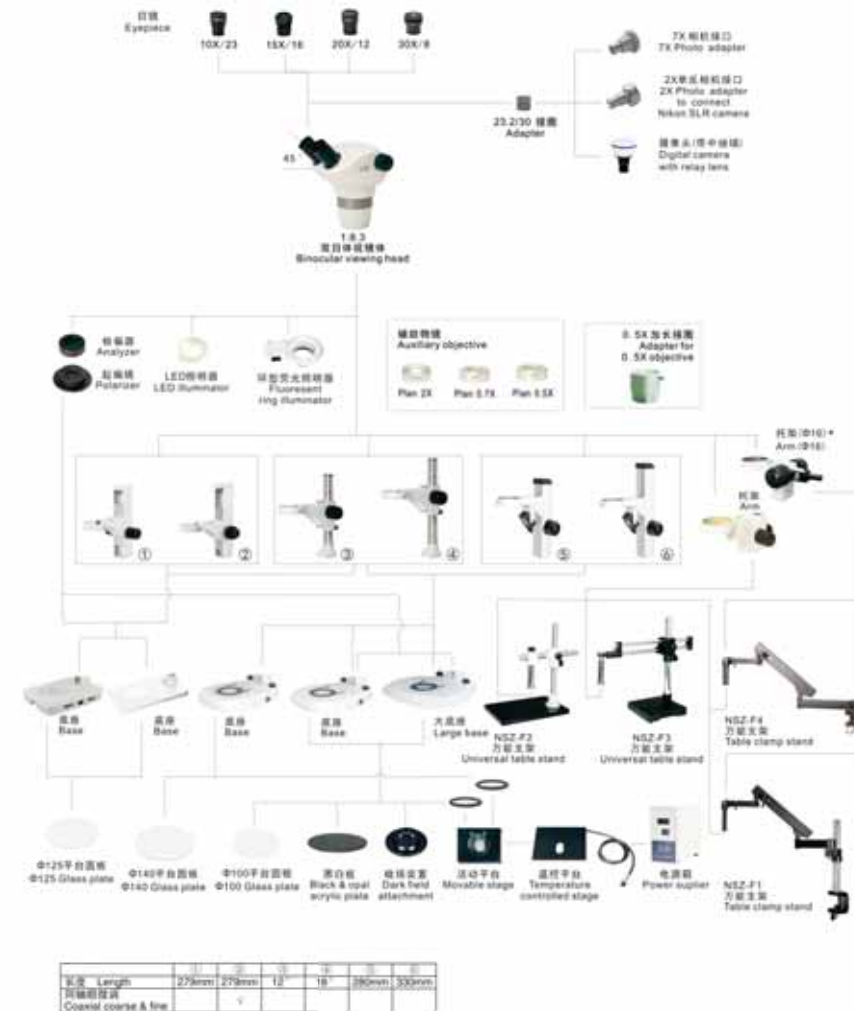


技术参数 Specification

| | | JSZ8A | JSZ8B |
|----------------------------|------------------------------------------------------------|-------|-------|
| 观察镜筒 Viewing Tube | 双目体视镜筒，倾角45° Binocular viewing head, Inclined at 45° | ● | ● |
| 视度可调目镜 Diopter Adjustment | 大视场平场目镜 WF10X/Φ23 Extra wide field eyepiece WF10X/Φ23 | ● | ● |
| 目镜 Eyepiece | WF15X/Φ16 | ○ | ○ |
| | WF20X/Φ12 | ○ | ○ |
| | WF30X/Φ9 | ○ | ○ |
| 变倍物镜 Zoom Objective | 0.6X-5X | ● | ● |
| 变倍比 Zoom Ratio | 1: 8.3 | ● | ● |
| 工作距离 Working Distance | 115mm | ● | ● |
| 瞳距 Interpupillary Distance | 55-75mm | ● | ● |
| 辅助物镜 Auxiliary objective | 0.5X WD: 220mm | ○ | ○ |
| | 0.7X WD: 125mm | ○ | ○ |
| | 2X WD: 45mm | ○ | ○ |
| 载物台插入盖板 Stage Insert | 直径 125mm 透明玻璃盘 Glass plate, Diameter 125mm | ● | ● |
| | 直径 100mm 透明玻璃盘 Glass plate, Diameter 100mm | ● | ● |
| | 直径 125mm 黑白板 Opal & black acrylic plate, Diameter 125mm | ● | ● |
| | 直径 100mm 黑白板 Opal & black acrylic plate, Diameter 100mm | ● | ● |
| 调焦行程 Focusing Range | 105mm | ● | ● |
| 光源 Illumination | 反射光照明 100V-240V/LED Incident illumination 100V-240V/LED | ● | ● |
| | 透射光照明 100V-240V/LED Transmitted illumination 100V-240V/LED | ● | ● |
| 摄影附件 Photo Attachment | | ○ | ○ |

注：●为标准配置，○为选购配件 Note: ● Standard Outfit, ○ Optional

系统配置图 System Diagram



注：* 表示与NSZ-F1, NSZ-F4相连接时需取下连接件
Note: * Take away the connecting column of NSZ-F1 and NSZ-F4.

JSZ5B (NSZ-405) 实习用体视显微镜 Academic Stereoscopic Microscopes JSZ5B (NSZ-405)

性能

- 具有高性能、高品质的优点,同时又有很高的性价比
- 合理的人机学设计简化了调节和操作,清晰的图像质量,超宽的视觉效果,是您最佳的选择
- 连续变倍比 1: 4. 5, 大视场目镜, 视场为 $\Phi 20\text{mm}$
- 可广泛应用于: 学校教学在自然科学方面的培训和教育; 医疗机构的日常检查; 精密制造业的装配、测试、测量以及品质管控, 尤其是IT产业检测

Features

- High quality, high function and excellent cost performance
- Best choose with ergonomic design, sharp image display and wide viewing field
- Providing a wide viewing field of $\Phi 20\text{mm}$ with the zoom ratio of 1:4. 5
- Ideal instrument in academic, medical and industrial field



屈光度可调 满足不同视力水平
Diopter adjustable



物镜变倍范围 0. 7X~3X/ 1X~4. 5,
变倍比 1: 4. 3/ 1: 4. 5
Zoom objective 0. 7X~3X/ 1X~4. 5X,
Zoom ratio 1: 4. 3/ 1: 4. 5



高清晰度、大视场以及长工作距离等
逼真再现物体的三维影像
High resolution, Wide viewing field,
Long working distance



双目观察倾斜45°
双瞳距调节范围55-75mm
Binocular head inclined at 45°
Interpupillary 55-75mm



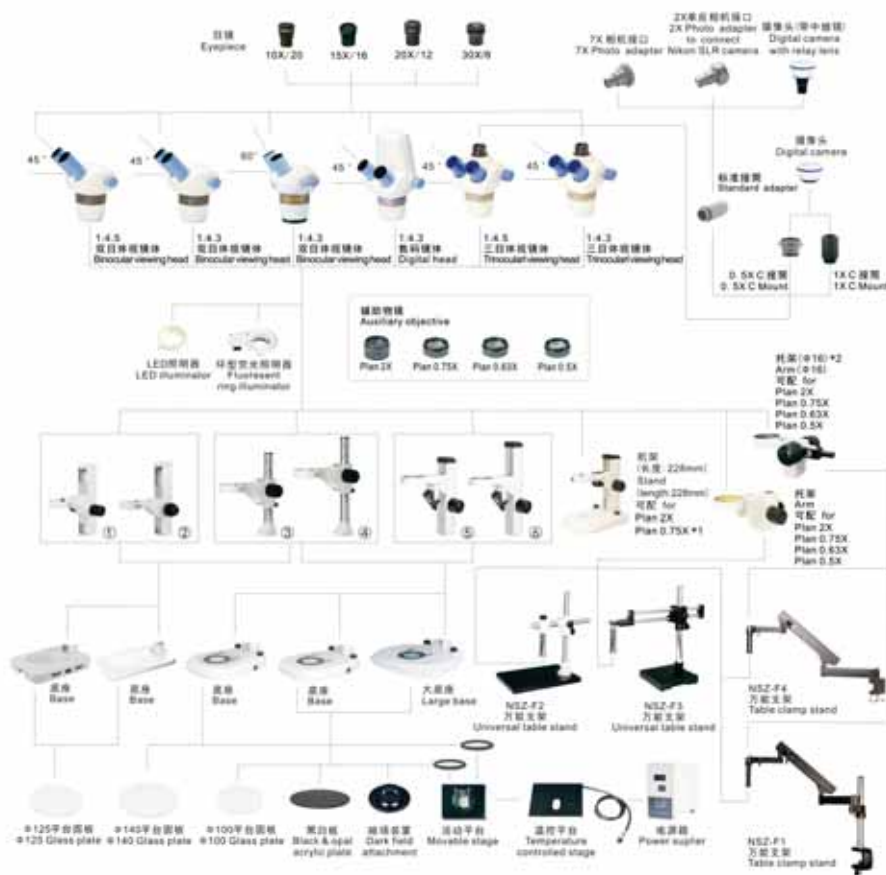
JSZ5B

技术参数 Specification

| | | JSZ5B | |
|---------------------------------------|--------------------------------------------|-------------------------------|---|
| 镜体 Viewing Tube | 双筒体视镜体, 倾角 45° | ● | |
| | 双筒体视镜体, 倾角 60° | ○ | |
| | 三筒体视镜体, 倾角 45° | ○ | |
| | 数码体视镜体, 倾角 45° | ○ | |
| 视度可调目镜 Diopter Adjustment Eyepiece | WF10X/Φ20 | ● | |
| | WF15X/Φ16 | ○ | |
| | WF20X/Φ12 | ○ | |
| | WF30X | ○ | |
| | EW10X 分划目镜 EW 10X Eyepiece with cross hair | ○ | |
| 物镜 Objective | 变倍物镜 Zoom objective | 0. 7X~3X 1X~4. 5X | |
| | 辅助物镜 Auxiliary objective | 2X WD: 30mm | ○ |
| | | 0. 75X WD: 120mm | ○ |
| | | 0. 63X WD: 137mm | ○ |
| | | 0. 5X WD: 180mm | ○ |
| 连续变倍比 Zoom Ratio | 1: 4. 3 1: 4. 5 | ● | |
| 工作距离 Working Distance | 97mm | ● | |
| 照明系统 illumination | LED 反射光照明 | LED Reflection illumination | |
| | LED 透射光照明 | LED Transmission illumination | |
| 摄影附件 Photo Attachment | | ○ | |
| 摄像附件 Video Attachment | | ○ | |

注: ●为标配, ○为选配附件 Note: ●Standard Outfit, ○Optional

系统配置图 System Diagram



| 长度 Length | 275mm | 275mm | 12 | 18 | 380mm | 330mm |
|-------------------------------|-------|-------|----|----|-------|-------|
| 内筒直径 Coaxial coarse & fine | | | | | | |

注: *1 表示该物镜在小机架上观察物体时最大物镜高度不能超过30mm.

*2 表示与NSZ-F1、NSZ-F4相连接时取下连接器.

Note: *1 The height of sample couldn't be over 30mm when viewed by the objective Plan 0. 75X.

*2 Take away the connecting column of NSZ-F1 and NSZ-F4.

NTB系列连续变倍体视显微镜 Zoom Stereo Microscope NTB Series



NTB-2B

NTB-4B



技术参数 Specification

| | | NTB-2B | NTB-4B |
|-----------------------------|-----------------------------------------------------|--------|--------|
| 镜体 Body | 双筒体视镜体 Binocular viewing microscope body | ● | ● |
| | 三筒体视镜体 Trinocular viewing microscope body | ○ | ○ |
| 目镜 Eyepiece | WF5X | ○ | ○ |
| | WF10X | ● | ● |
| | WF15X | ○ | ○ |
| | WF20X | ○ | ○ |
| 变倍物镜 Zoom Objective | 0.7X-4.5X | | ● |
| | 1X-4X | ● | |
| 辅助物镜 Auxiliary Objective | 0.5X | ○ | ○ |
| | 0.75X | ○ | ○ |
| | 1.5X | ○ | ○ |
| 连续变倍比 Zoom Ratio | 1: 4 | ● | |
| | 1: 6.5 | | ● |
| 工作距离 Working Distance | 82mm | ● | |
| | 100mm | | ● |
| 透射光源 Transmitted Light | 12V/10W 卤素灯 12V/10W Halogen Lamp | ● | |
| | 12V/15W 卤素灯 12V/15W Halogen Lamp | | ● |
| 反射光源 Incident Light | 12V/10W 卤素灯带反光碗 12V/10W Halogen lamp with reflector | ● | |
| | 12V/15W 卤素灯带反光碗 12V/15W Halogen lamp with reflector | | ● |
| 摄影附件 Photo Attachment | | ○ | ○ |
| 摄像附件 Video Attachment | | ○ | ○ |

注: ●为标配, ○为选购配件 Note: ● Standard Outfit, ○ Optional

NS80系列变档体视显微镜 Stereo Microscope NS80 Series



NS80

性能

- 卓越的光学性能, 是同档次显微镜中的优越者。
- 变档物镜1X/3X、1X/4X、1X/2X、2X/3X、2X/4X可供选择, 丰富的目镜和辅助物镜扩展了倍率范围(5X-240X)。
- 最佳眼点高度, 即使长时间使用眼睛也不会疲劳。
- 紧凑、轻巧的结构, 可配套其他设备使用, 工作距离长, 通用性强, 适用于多种检测。
- 可采用的静电设计。

Features

- The microscope is among the best in its class with excellent optical performance.
- Various objectives 1X/2X, 1X/4X, 1X/2X, 2X/3X, 2X/4X are available.
- Magnification range 5X-240 with optional eyepieces and auxiliary objectives.
- Comfortable operation with proper eyepoint.
- Compact structure, long working distance, suitable for various applications.
- ESD design is available.

技术参数 Specification

| | | NS80/13 | NS80/14 | NS80/12 | NS80/23 | NS80/24 | |
|---------------------------------------------|----------------------------------------------------------------------|-----------------|---------|---------|---------|---------|---|
| 镜体 Viewing Tube | 双筒体视镜体, 倾角 45° Binocular head, inclined at 45° | ● | ● | ● | ● | ● | |
| | 双筒体视镜体, 倾角 60° Binocular head, inclined at 60° | ○ | ○ | ○ | ○ | ○ | |
| | 三筒体视镜体, 倾角 45° Trinocular head, inclined at 45° | ○ | ○ | ○ | ○ | ○ | |
| 视度可调目镜 Diopter Adjustment Eyepiece | WF10X/Φ23 | ● | ● | ● | ● | ● | |
| | WF10X/Φ20 | ○ | ○ | ○ | ○ | ○ | |
| | WF10X/Φ22 | ○ | ○ | ○ | ○ | ○ | |
| | WF15X/Φ16 | ○ | ○ | ○ | ○ | ○ | |
| | 高眼点 WF20X/Φ12 High-point WF20X/Φ12 | ○ | ○ | ○ | ○ | ○ | |
| | 低眼点 WF20X/Φ12 Low-point WF20X/Φ12 | ○ | ○ | ○ | ○ | ○ | |
| 物镜 Objective | WF30X/Φ8 | ○ | ○ | ○ | ○ | ○ | |
| | WF10X 分划目镜 WF10X Eyepiece with cross hair | ○ | ○ | ○ | ○ | ○ | |
| | 变档物镜 Objective | 1X/3X | ● | | | | |
| | | 1X/4X | | ● | | | |
| | | 1X/2X | | | ● | | |
| | | 2X/3X | | | | ● | |
| | 辅助物镜 Auxiliary objective | 2X/4X | | | | | ● |
| | | 2X WD: 30mm | ○ | ○ | ○ | ○ | ○ |
| | | 0.75X WD: 120mm | ○ | ○ | ○ | ○ | ○ |
| | | 0.63X WD: 137mm | ○ | ○ | ○ | ○ | ○ |
| 工作距离 Working Distance | 0.5X WD: 180mm | ○ | ○ | ○ | ○ | ○ | |
| | 97mm | ● | ● | ● | ● | ● | |
| 体视架台 Stand | 无光源架台 Stand without illumination | ○ | ○ | ○ | ○ | ○ | |
| | 透射架台, LED 照明 Stand with LED transmission illumination | ○ | ○ | ○ | ○ | ○ | |
| | 反射架台, LED 照明 Stand with LED reflecting illumination | ○ | ○ | ○ | ○ | ○ | |
| 接筒 Adapter | 透/反射架台, LED 照明 Stand with LED transmission & reflecting illumination | ● | ● | ● | ● | ● | |
| | TV 接筒 TV Mount | ○ | ○ | ○ | ○ | ○ | |
| | 0.5X C 接口 0.5X C Mount | ○ | ○ | ○ | ○ | ○ | |
| | 1X C 接口 1X C Mount | ○ | ○ | ○ | ○ | ○ | |

注: ●为标配, ○为选购配件 Note: ● Standard Outfit, ○ Optional

体视显微镜 Stereo Micro
 宝石显微镜 Gem Micro
 单筒连续变倍显微镜 Monocular Zoom Micro
 金相显微镜 Metallurgical Micro
 偏光显微镜 Polarizing Micro
 便携式测量显微镜 Portable Measuring Micro
 附件 Attachment

体视显微镜 Stereo Micro
 宝石显微镜 Gem Micro
 单筒连续变倍显微镜 Monocular Zoom Micro
 金相显微镜 Metallurgical Micro
 偏光显微镜 Polarizing Micro
 便携式测量显微镜 Portable Measuring Micro
 附件 Attachment

NTX系列变倍体视显微镜 Microscope NTX Series



NTX-1A **NTX-2B**



NTX-3C **NTX-5C** **NTX-6C-W**

- 性能**
- 双目瞳距: 55-75mm
 - 单目视度调节: +/-5屈光度
 - 照明: 110V或220V/ 12V10W, CE认证
 - 可供附件: 插入式物镜1X, 3X, 4X, 6X
 旋转式物镜1X&2X, 1X&3X
 目镜 WF5X, WF15X, WF20X
- Features**
- Interpupillary distance: 55-75mm
 - One tube with diopter adjustment: +/-5 Dio.
 - Illumination: 110V or 220V/12V10W, CE approval
 - Optional accessories:
 Inserted objective 1X, 3X, 4X, 6X
 Rotated Objective 1X&2X, 1X&3X
 Eyepiece WF5X, WF15X, WF20X

| 型号 Model | 照明光源 Illumination | 观察头和镜体 Head and Body | 物镜 Objective | 工作距离 W.D. | 目镜 Eyepiece |
|-------------|------------------------------------|-------------------------------------------------------------|----------------------------------|--------------|----------------|
| NTX-1A | 无光源 No Light | 直筒观察 Straight Viewing | 2X 插入式 Inserted | 80MM | WF10X/20 |
| NTX-1B | 落射光源 Incident Light | | | | |
| NTX-1C | 落射/透射光源 Incident/Transmitted Light | | | | |
| NTX-2A | 无光源 No Light | 斜筒观察 镜体不可旋转 Inclined Viewing Un-rotatable Body | 2X&4X 旋转式90° 90° Rotated | 57MM | |
| NTX-2B | 落射光源 Incident Light | | | | |
| NTX-2C | 落射/透射光源 Incident/Transmitted Light | | | | |
| NTX-3A | 无光源 No Light | | | | |
| NTX-3B | 落射光源 Incident Light | 斜筒观察 镜体360°可转 Inclined Viewing Body 360° rotatable | 2X&4X 旋转式360° 360° Rotated | 76MM | |
| NTX-3C | 落射/透射光源 Incident/Transmitted Light | | | | |
| NTX-5A | 无光源 No Light | | | | |
| NTX-5B | 落射光源 Incident Light | | | | |
| NTX-5C | 落射/透射光源 Incident/Transmitted Light | 落射/透射光源 Incident/Transmitted Light | | | |
| NTX-6C-W | 落射/透射光源 Incident/Transmitted Light | | | | |



NTX-10 **NTX-20**

| 规格 Specifications | | NTX-10 | NTX-20 |
|----------------------------------------|-----------------------------------------------------------------------------------------------|--------|--------|
| 目镜 Eyepiece | WF10X / Φ20 WF5X, WF15X, WF20X | ○ | ○ |
| 物镜/工作距离 Working Distance/ Objective | 2X & 4X/ 72mm 1X & 2X/72mm, 1X & 3X/72mm | ○ | ○ |
| 辅助物镜 Auxiliary Objective | 0.5X, 0.75X, 1.5X, 2X | ○ | ○ |
| 照明 Illumination | 无光源 No Light 透射和落射照明, 卤素灯 Transmitted and Incident Light 110V or 220V/6V12W T-H Lamp | ○ | ○ |

长工作距离体视显微镜 Long Working Distance Stereo Microscope



NTX-L



- 规格**
- 长臂机架
 - 斜筒双目观察, 双目调节范围55-75mm, 左目镜筒视度可调 +/-5 屈光度
 - 大视场目镜 WF10X / Φ20
 - 插入式物镜 1X
 - 物镜工作距离 230mm
 - 照明 110V或220V/12V30W 白炽灯
- 选购件:**
- 物镜 0.5X, 工作距离 250mm
 - 目镜 WF5X / Φ22, WF15X / Φ15, WF20X / Φ10

- Specification**
- Long Arm for Microscope Body
 - Inclined Binocular Head Interpupillary Distance 55-75mm
 - Diopter Adjustment on Left Tube +/-5 Dio.
 - Eyepiece WF10X
 - Inserted Objective 1X
 - Working Distance of Objective 230mm
 - Illumination 110V or 220V/ 12V10W Incandescent Lamp
- Options:**
- Objective 0.5X, Working Distance 250mm
 - Eyepiece WF5X/Φ22, WF15X/Φ15, WF20X/Φ10

NGI系列宝石显微镜 Professional Gem Microscope NGI Series

性能

- 高亮度的暗场照明，可观察到高清晰和高分辨率的立体图像，是鉴定宝石等的专用显微镜
- 多功能、人性化的结构设计使操作者的工作效率大大提高，减轻操作者的疲劳感

Features

- Offering crisp sharp and high resolution image with bright dark ground illumination, it is a professional gemological stereo zoom microscope
- Designing in economic idea, it makes operators feel more comfortable



机架 Stand

NGI-6

技术参数 Specification

| | | NGI-6 |
|-------------------------------------------------------|------------------------------------------------------------------------------------------------------------------------------|-------------|
| 变倍镜体 Stereo Zoom Body | 变倍物镜 0.8X-5X, 变倍比 1: 6.3, 工作距离 115mm Zoom objective 0.8X-5X, Zoom ratio 1: 6.3, Working distance 115mm | ● |
| 目镜 Eyepiece | 广角目镜 WF15X/Φ16, 视度可调 Extra wide field eyepiece WF15X/Φ16 with diopter adjustment | ● |
| 明、暗场照明 Bright & Dark Viewing Field illumination | 可变光栏 Φ2mm-41mm, 可对照明光束进行调节, 方便明、暗场照明的转换 Iris diaphragm 2mm-41mm Bright and dark viewing field illumination adjustable | ● |
| 照明 Illumination | 9W 日光型荧光灯, 符合对钻石的照明要求 9W Fluorescent lamp LED 点光源 LED Point Light 6V/20W 卤素灯, 可下拉式接灯泡 6V/20W Halogen illumination | ● ● ● |
| 调焦系统 Focusing | 110mm 调焦行程, 可对大小不同的宝石及样品进行观察 Focusing range: 110mm; Suitable for observing different size gem and sample | ● |
| 钢丝宝石夹 Gem Clamp | 刚性适中的钢丝宝石夹夹持牢固、方便, 并能减少宝石腰部的光线遮挡, 可对宝石进行全方位地观察 Quality steel clamp to hold the gem for all direction observations of gems | ● |
| 工作台 Stage | 两边都有宝石夹的安装孔, 操作者可以根据自己的习惯选择 Two gem clamp fixing holds for you to choose | ● |
| 弯臂 Stand | 弯臂可作 0-38° 倾斜, 从而可以调节观察眼点的高度和角度, 使操作更加方便舒适 0-38° Rotatable, eyepoint height and angle adjustable | ● |
| 底座 Base | 底座可作 0°-325° 旋转 0°-325° Rotatable | ● |

注: ●为标准配置, ○为选购配件 Note: ● Standard Outfit, ○ Optional

NXZ系列单筒连续变倍显微镜 Monocular Zoom Microscope NXZ Series

性能

- 高品质的光学系统, 分辨率达 200lp/mm, 提供了清晰、平坦的图像。
- 超短的镜筒, 结构紧凑, 适用于在多种工业设备上使用, 满足空间的需求。
- 可配置高分辨率摄像系统, 为电子工业、半导体的检测, 以及教学研究而专业设计。

Features

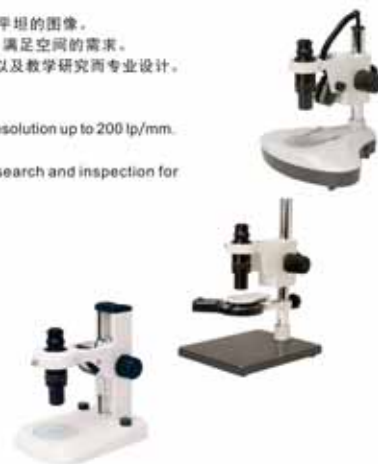
- Provided clear, flat image with high quality optical system, resolution up to 200 lp/mm.
- Widely used in industrial field with compact structure.
- Equipped with high resolution camera for educational research and inspection for electronic industry and semiconductor.



NXZ-10



NXZ-10D



技术参数 Specification

| | | NXZ-10 | NXZ-10D |
|-----------------|--------------------------------------------------------------------------------------------------------------------------------------------------------|-------------------------------------------------------|-----------------------|
| 镜体 Body | 目镜 WF10X Eyepiece WF10X 连续变倍比 1 : 6.5 Zoom Ratio: 1 : 6.5 总放大倍率 7X-45X Total Magnification 7X-45X 工作距离 94mm Working Distance 94mm | ● ● ● ● ● | ● ● ● ● ● |
| | 摄像系统 Video System | 中透镜 Relay Lens 各种摄像机 Various Digital Cameras | ● ○ ○ ○ |
| 软件 Software | ScopelImage 9.0 | ○ | ○ |
| 附件 Accessory | 辅助物镜 Auxiliary Objective | ○ ○ ○ | ○ ○ ○ |
| | 各种类型的体视机架 Various Stands | ○ | ○ |

注: ●为标准配置, ○为选购配件 Note: ● Standard Outfit, ○ Optional

体视显微镜
Stereo Micro

宝石显微镜
Gem Micro

单筒连续变倍显微镜
Monocular Zoom Micro

金相显微镜
Metallographical Micro

偏光显微镜
Polarizing Micro

便携式测量显微镜
Portable Measuring Micro

附件
Attachment

体视显微镜
Stereo Micro

宝石显微镜
Gem Micro

单筒连续变倍显微镜
Monocular Zoom Micro

金相显微镜
Metallographical Micro

偏光显微镜
Polarizing Micro

便携式测量显微镜
Portable Measuring Micro

附件
Attachment

NMM-800/820 系列金相显微镜 Metallurgical Microscope NMM-800/820 Series

性能

- 研究用系统金相显微镜，透射明场、暗场、偏光等观察方式。
- 反射、透反射两种照明系统可选，配有大功率透反射式双光源柯勒照明系统。
- 适用于工矿企业、高等院校及科研等机构作材料内部组织结构分析。

Features

- Laboratory metallurgical microscope, including bright field, dark field and polarization observation system.
- Powerful transmitted and reflected system with Kohler illumination.
- Ideal instrument for industry inspection and science research.



NMM-800

NMM-820

技术参数 Specification

| 光学系统 Optical System | 无限远系统 Infinite optical system | NMM-800RF | NMM-800TRF | NMM-820RF | NMM-820TRF |
|-----------------------------------------------|------------------------------------------------------------------------------------------------------------------------------------|-----------|------------|-----------|------------|
| 目镜 Eyepiece | 超宽视野目镜 EW10X/22, 镀膜 Ø30 Extra wide field eyepiece EW10X/22 | ● | ● | ● | ● |
| | 5X/0.12(=1)(BF) (明场) WD 15.5mm | ● | ● | ● | ● |
| | 10X/0.25(=1)(BF/DF) (明暗场共用) WD 10.0mm | ● | ● | ● | ● |
| | 20X/0.4(=0)(BF/DF) (明暗场共用) WD 4.30mm | ● | ● | ● | ● |
| | 50X/0.75(=0)(BF) (明场) WD 0.32mm | ● | ● | ● | ● |
| | 100X/0.8(=0)(BF) (明场) WD 2mm | ● | ● | ● | ● |
| 无穷远平场消色差物镜 Infinite Plan Achromatic Objective | 40X/0.65(=0.17) WD 0.54mm | ● | ● | ● | ● |
| | 100X/1.25(=0.17) WD 0.13mm | ● | ● | ● | ● |
| | 2.5X/0.08(=1)(BF) (明场) WD 11.7mm | ○ | ○ | ○ | ○ |
| | 2.5X/0.08(=1)(BF) (明场) WD 10.7mm (A系列) | ○ | ○ | ○ | ○ |
| | 5X/0.12(=1)(BF/DF) (明暗场共用) WD 12mm | ○ | ○ | ○ | ○ |
| | 40X/0.6(=0)(BF/DF) (明暗场共用) WD 2.90mm | ○ | ○ | ○ | ○ |
| | 50X/0.75(=0)(BF/DF) (明暗场共用) WD 0.32mm | ○ | ○ | ○ | ○ |
| | 100X/0.8(=0)(BF/DF) (明暗场共用) WD 2mm | ○ | ○ | ○ | ○ |
| 微分干涉 DIC | 20X, 100X | ○ | ○ | ○ | ○ |
| 最大标本高度 Maximum Sample Height | 30mm | ● | ● | ● | ● |
| | 50mm | ● | ● | ● | ● |
| 观察头 Viewing Head | 铰链式三目观察头, 30°倾斜, 瞳距 48-75mm Siedentopf trinocular viewing head, inclined at 30°, interpupillary 48mm-75mm | ● | ● | ● | ● |
| 反射照明 Incident Light | 24V/100W 卤素灯, 亮度可调 24V/100W Halogen light, brightness adjustable 柯勒照明系统, 半球透镜光源 Kohler illumination and aspherical condenser | ● | ● | ● | ● |
| | 起偏镜, 检偏镜 Polarizer and analyzer | ○ | ○ | ○ | ○ |
| | 起偏、检偏同步选择镜 An integrate device for polarizer and analyzer | ○ | ○ | ○ | ○ |
| | 蓝、绿、黄滤色片和磨砂玻璃 Blue, Green, Yellow and Ground glass | ● | ● | ● | ● |
| 透射照明 Transmitted Light | 摆出式聚光镜 NA0.90.25 Swing-out condenser NA0.90.25 24V/100W 卤素灯, 半球透镜光源 Halogen light and aspherical condenser 蓝色滤色片 Blue filter | ● | ● | ● | ● |
| 滤光片 Filter | ND25, ND6 | ○ | ○ | ○ | ○ |
| 调焦系统 Focusing | 粗微动同轴调焦, 微动格值 1μm, 粗动范围 30mm Coaxial coarse and fine adjustment, fine division 1μm, moving range 30mm | ● | ● | ● | ● |
| 转换器 Nosepiece | 内凹式五孔转换器 Backward quintuple nosepiece | ● | ● | ● | ● |
| | 无孔前双梁活动平台 186X138mm/74mmX50mm Non-porous double layer mechanical stage 186X138mm/74mmX50mm | ● | ● | ● | ● |
| 载物台 Stage | 矩形双梁活动平台 186X138mm/74mmX50mm Double layer mechanical stage 186X138mm/74mmX50mm | ● | ● | ● | ● |
| | 矩形三梁活动平台 186X148mm, 移动范围 78mmX54mm Double layer mechanical stage 186X148mm, Moving range 78mmX54mm | ○ | ○ | ○ | ○ |
| | 载物平板 Specimen preparation plate | ● | ● | ● | ● |
| | 载玻片 Slide glass | ● | ● | ● | ● |
| 压片机 Specimen Presser | | ○ | ○ | ○ | ○ |
| 摄影附件 Photo Attachment | | ○ | ○ | ○ | ○ |
| 摄像附件 Video Attachment | 标准 C 型接口 1X, 0.5X C Mount 1X, 0.5X | ○ | ○ | ○ | ○ |

注: ●为标准配置, ○为选购配件 Note: ● Standard Outfit, ○ Optional

MV5000 金相显微镜 Metallurgical Microscope MV5000

性能

- 研究用系统金相显微镜，透射明场、暗场、偏光、微分干涉等观察方式。
- 反射、透反射两种照明系统可选，配有大功率透反射式双光源柯勒照明系统。
- 适用于工矿企业、高等院校及科研等机构作材料内部组织结构分析。

Features

- Laboratory metallurgical microscope, including bright field, dark field, polarization and DIC observation system.
- Powerful transmitted and reflected system with Kohler illumination.
- Ideal instrument for industry inspection and science research.



暗场观察
Darkfield Observation System



偏光观察
Polarization Observation System



MV5000

技术参数 Specification

| 光学系统 Optical System | 无限远光学系统 Infinite optical system | MV5000 (R) | MV5000 (TR) |
|-----------------------------------------------|--------------------------------------------------------------------------------------------------------------------------------------------------------|------------|-------------|
| 超宽视野目镜 Extra Wide Field Eyepiece | WF10X/20, 十字分划目镜 WF10X/20 Eyepiece with scale of cross hair | ● | ● |
| | WF15X/16 | ○ | ○ |
| | WF20X/12 | ○ | ○ |
| 无穷远平场消色差物镜 Infinite Plan Achromatic Objective | 5X/0.12(=1)(BF/DF) LWD 10mm | ● | ● |
| | 10X/0.25(=1)(BF/DF) LWD 10mm | ● | ● |
| | 20X/0.4(=0)(BF/DF) LWD 5mm | ● | ● |
| | 50X/0.75(=0)(BF/DF) LWD 1.3mm | ● | ● |
| | 100X/0.90(Dry)(=0)(BF/DF) LWD 0.7mm | ● | ● |
| | 40X/0.65(=0.17)(BF) WD 0.6mm | ● | ● |
| | 100X/1.25(=0.17)(BF) WD 0.16mm | ● | ● |
| 观察头 Viewing Head | 铰链式双目观察头, 30°倾斜, 瞳距 48-75mm Siedentopf binocular viewing head, inclined at 30° | ● | ● |
| | 铰链式三目观察头, 30°倾斜, 瞳距 48-75mm Siedentopf trinocular viewing head, inclined at 30° | ○ | ○ |
| 柯勒照明 Kohler Incident Light | 12V/50W 卤素灯, 亮度可调 12V/50W Halogen light, Center and brightness adjustable 12V/20W 卤素灯, 亮度可调 12V/20W Halogen light, Center and brightness adjustable | ● | ● |
| | 起偏镜, 检偏镜 Polarizer and analyzer | ○ | ○ |
| | 微分干涉 DIC | ○ | ○ |
| | 绿、灰滤色片, 色温片和磨砂玻璃 Green, Gray filter and ground glass | ● | ● |
| 调焦系统 Focusing | 粗微动同轴调焦, 微动格值 2μm, 粗动范围 30mm Coaxial coarse and fine adjustment, fine division 2μm, moving range 30mm | ● | ● |
| 转换器 Nosepiece | 内凹式五孔转换器 Backward quintuple nosepiece | ● | ● |
| 载物台 Stage | 矩形双梁活动平台 216X150mm, 移动范围 78mmX54mm Double layer mechanical stage 216X150mm, Moving range 78mmX54mm | ● | ● |
| | 矩形三梁活动平台 186X148mm, 移动范围 78mmX54mm Double layer mechanical stage 186X148mm, Moving range 78mmX54mm | ○ | ○ |
| 附件 Accessories | 压片机 Specimen Presser | ○ | ○ |
| | 摄影附件 Photo attachment | ○ | ○ |
| | 物镜测微尺 0.01mm Micrometer scale 0.01mm | ● | ● |

注: ●为标准配置, ○为选购配件 Note: ● Standard Outfit, ○ Optional

METAM LV 金相显微镜 Metallurgical Microscope METAM LV

性能

- 材料显微专家追求高性能光学工具的最佳选择，在材料研发、质量控制和失效分析领域，从微观结构分析到微粒测量操作，及其他挑战性的应用，江南倒置金相显微镜都为您呈现最优的光学性能。

Features

- Best choice for material microscopy expert who requires high-performance optical tool. It also supplies the best optical performance for material research, quality control, Invalidation Analysis and other applications.



METAM LV

技术参数 Specification

| | | METAM LV |
|-----------------------------------------------|---------------------------------------------------------------------------------------------------------|----------|
| 光学系统 Optical System | 无限远光学系统 Infinite optical system | ● |
| 超大视野目镜 Extra Wide Field Eyepiece | WF10X/20 | ● |
| | WF10X/20, 十字分划目镜 WF10X/20 Eyepiece with scale of cross hair | ● |
| | WF15X/16 | ○ |
| | WF20X/12 | ○ |
| 无穷远平场复消色差物镜 Infinite Plan APO Objective | 5X/0.17/∞(BF/DF) WD 8.6mm | ● |
| | 10X/0.28/∞(BF/DF) WD 3.4mm | ● |
| | 20X/0.5/∞(BF/DF) WD 1.1mm | ● |
| | 50X/0.85/∞(BF/DF) WD 0.5mm | ● |
| | 100X/0.95(Dry)/∞(BF) WD 0.1mm | ● |
| 100X/1.32(Oil)/∞(BF) WD 0.1mm | ○ | |
| 观察头 Viewing Head | 铰链式三目观察头, 30°倾斜 Siedentopf trinocular viewing head, inclined at 30° | ● |
| 柯勒照明 Kohler Incident Light | 12V/100W 卤素灯, 中心、亮度连续可调 12V/100W Halogen light, Center and brightness adjustable | ● |
| | 起偏镜、检偏镜 Polarizer and analyzer 微分干涉 DIC | ● ○ |
| 调焦系统 Focusing | 绿、蓝、黄、灰滤色片和磨砂玻璃 Green, Blue, Yellow, Gray and ground glass | ● |
| | 相微动同轴调焦, 微调格值 2μm, 粗动松紧调节, 移动范围向上 1mm, 向下 12mm Coaxial coarse and fine adjustment, fine division 2μm | ● |
| 转换器 Nosepiece | 五孔转换器 Quintuple nosepiece | ● |
| 载物台 Stage | 矩形双层活动平台 200X190mm, 移动范围 40mmX40mm Double layer mechanical stage 200X190mm, Moving range 40mmX40mm | ● |
| 附件 Accessories | 小平台: Φ16, Φ40, 水滴形 Stage: Φ16, Φ40, Teardrop | ● |
| | 摄影、摄像附件 Photo/ Video attachment 物镜测微尺 0.01mm Micrometer scale 0.01mm | ○ ● |

注: ●为标准配置, ○为选购配件 Note: ● Standard Outfit, ○ Optional

MR5000 金相显微镜 Metallurgical Microscope MR5000

性能

- 高性能光学系统, 简便的操作, 创新的技术, 完善的功能, 良好的稳定性, 能满足您现在及将来的各种应用需求, 能实现灵活升级, 比如可以轻松实现 DIC 观察

Features

- Meets all your requirement by High performance optical system, technological innovation, high stability. It also can be easily upgraded, for example DIC Viewing.



MR5000

技术参数 Specification

| | | MR5000 |
|------------------------------------------------------------------|-------------------------------------------------------------------------------------------------------------|--------|
| 光学系统 Optical System | 无限远系统 Infinite optical system | ● |
| 超大视野目镜 Extra Wide Field Eyepiece | WF10X/22 | ● |
| | WF10X/20, 十字分划目镜 WF10X/20 Eyepiece with Scale of Cross hair | ● |
| | WF15X/16 | ○ |
| | WF20X/12 | ○ |
| 无穷远长工作距离 平场消色差物镜 Infinite LWD Plan Achromatic Objective | 5X/0.12/∞(BF/DF) LWD 10mm | ● |
| | 10X/0.25/∞(BF/DF) LWD 10mm | ● |
| | 20X/0.4/∞(BF/DF) LWD 5mm | ● |
| | 50X/0.75/∞(BF/DF) LWD 1.3mm | ● |
| | 100X/0.9/∞(BF/DF) LWD 0.7mm | ● |
| 观察头 Viewing Head | 铰链式双目观察头, 30°倾斜, 瞳距 48-75mm Siedentopf binocular viewing head, inclined at 30°, Interpupillary 48mm-75mm | ● |
| 柯勒照明 Kohler Incident Light | 12V/50W 卤素灯, 预置中心、亮度连续可调 12V/50W Halogen light, Center and brightness adjustable | ● |
| | 起偏镜、检偏镜 Polarizer and analyzer 微分干涉 DIC | ● ○ |
| 调焦系统 Focusing | 内置式绿、蓝、黄、灰滤色片和磨砂玻璃 built-in Green, Blue, Yellow, Gray and ground glass | ● |
| | 相微动同轴调焦, 微调格值 2μm, 粗动松紧调节, 移动范围向上 1mm, 向下 7mm Coaxial coarse and fine adjustment, fine division 2μm, | ● |
| 转换器 Nosepiece | 内孔式五孔转换器 Backward quintuple nosepiece | ● |
| 载物台 Stage | 矩形双层活动平台 226X178mm, 移动范围 40mmX40mm Double layer mechanical stage 226X178mm, Moving range 40mmX40mm | ● |
| 附件 Accessories | 小平台: Φ20, Φ30, 水滴形 Stage Φ20, Φ30, Teardrop | ● |
| | 摄影附件 Photo/Video attachment 物镜测微尺 0.01mm Micrometer scale 0.01mm | ○ ● |

注: ●为标准配置, ○为选购配件 Note: ● Standard Outfit, ○ Optional

体视显微镜
Stereo Micro

宝石显微镜
Gem Micro

单筒连续变倍显微镜
Monocular Zoom Micro

金相显微镜
Metallurgical Micro

偏光显微镜
Polarizing Micro

便携式测量显微镜
Portable Measuring Micro

附件
Attachment

体视显微镜
Stereo Micro

宝石显微镜
Gem Micro

单筒连续变倍显微镜
Monocular Zoom Micro

金相显微镜
Metallurgical Micro

偏光显微镜
Polarizing Micro

便携式测量显微镜
Portable Measuring Micro

附件
Attachment

NIM-100倒置金相显微镜 Inverted Metallurgical Microscope NIM-100

性能

- 无限远光学系统，提供了卓越的光学性能。
- 可供观察和鉴别各种金属和合金的组织机构，其舒适稳重的镜体机构、高效方便的载物台设计、轻松快捷的操作方式，适合学校、工矿企业实验室长时间的轻松操作。

Features

- Infinite optical system providing excellent optical functions.
- With the stable stand structure, advanced stage design and comfortable operation, it is widely used in institute and laboratory to observe and identify the structure of various metal and alloy.



NIM-100

技术参数 Specification

| | | NIM-100 |
|-----------------------------------------------|----------------------------------------------------------------------------------------------------------------------------------------------------------------------------------------|---------|
| 观察头 Viewing Head | 三目观察头，30°倾斜，瞳距 48-75mm Trinocular head inclined at 30°, Interpupillary 48-75mm | ● |
| 目镜 Eyepiece | 高眼点，超大视野目镜 EW10X/20 High-point, Extra wide field eyepiece EW10X/20 | ● |
| 无限远平场物镜 Infinite Plan Achromatic Objective | 2.5X/0.08/∞/- WD 11.7mm | ○ |
| | 2.5X/0.08/∞/- WD 10.7mm (A玻片) | ○ |
| | 4X/0.1/∞/- WD 28mm | ● |
| | 5X/0.12/∞/- WD 15.4mm | ○ |
| | 10X/0.25/∞/- WD 10mm | ● |
| | 20X/0.4/∞/0 WD 5.8mm | ● |
| 转换器 Nosepiece | 40X/0.6/∞/0 WD 2.90mm | ● |
| | 50X/0.75/∞/0 WD 0.32mm | ○ |
| | 100X/0.80/∞/0 WD 2mm | ○ |
| | 五孔转换器 Quintuple nosepiece | ● |
| 载物台 Stage | 平面载物台带压片 Plain stage with slide clips | ● |
| | 机械移动尺，右手低位同轴 X、Y 方向旋钮，移动范围 120X78mm Attachable mechanical stage, X-Y Coaxial control, Moving rang 120X78mm | ○ |
| | 矩形双层活动平台 226X178mm，移动范围 50X50mm * Double layer mechanical stage 226X178mm, Moving rang 50X50mm | ○ |
| 调焦系统 Focusing | 接长托板 Auxiliary stage | ○ |
| | 同轴粗微调焦机构，通过转换器的上下移动进行调焦，粗调行程每圈 37.7mm，微调行程每圈 0.2mm Coaxial coarse & fine adjustment, Vertical objective movement, Coarse stroke 37.7mm per rotation, Fine stroke 0.2mm per rotation | ● |
| 照明 Illumination | 6V/ 30W 卤素灯，柯拉照明 Halogen lamp 6V/ 30W, Kohler illumination | ● |
| 滤色镜 Filter | 蓝色、黄色、绿色、磨砂玻璃片 Blue, Yellow, Green and ground glass | ● |
| 偏光装置 Polarization Attachment | | ● |
| 摄影附件 Photo Attachment | | ○ |
| 摄像接口 Video Adapter | 标准 C 接口 Video adapter with C mount | ○ |

注：●为标准配置，○为选购配件
*建议用长距离物镜
Note: ● Standard Outfit, ○ Optional
Long Working Distance Objective is Available

MR2100金相显微镜 Metallurgical Microscope MR2100

性能

- 教学、实验、常规检测用倒置金相显微镜。
- 操作简单易用，同样具有出色的成像质量。

Features

- Perfect for education, experiment, normal testing.
- Easy operation, also supplies high quality image.



MR2100

技术参数 Specification

| | | MR2100 |
|-----------------------------|-----------------------------------------------------------------------------------------------------------------|--------|
| 观察头 Viewing Head | 平拉式双目观察头 Sliding binocular viewing head | ● |
| | 单目观察头 Monocular viewing head | ○ |
| | 内置数码平移式双目观察头 Integrative sliding binocular digital head | ○ |
| 目镜 Eyepiece | WF10X/18 | ● |
| | WF12.5X/14 | ● |
| | WF16X/11 | ○ |
| 物镜 Objective | 消色差物镜 10X, 100X Achromatic objective 10X, 100X | ● |
| | 平场消色差物镜 40X Plan achromatic objective 40X | ● |
| | 长工作距离平场消色差物镜 50X LWD Plan achromatic objective 50X | ○ |
| 转换器 Nosepiece | 三孔转换器 Triple nosepiece | ● |
| 调焦系统 Focusing System | 同轴粗微调焦机构，微调格值 0.002mm，调焦范围 30mm Coaxial coarse and fine adjustment, Fine division 0.002mm, Moving range 30mm | ● |
| 载物台 Stage | 机械平台 180X155mm，移动范围 40X30mm Mechanical stage 180X155mm, Moving range 40X30mm | ● |
| 科勒照明 Kohler illumination | 12V/20W 卤素灯，亮度连续可调 12V/20W Halogen lamp, Brightness adjustable | ● |
| 滤色片 Filter | 绿色、蓝色、黄色、毛玻璃 Blue, Green, Yellow and ground glass | ● |

注：●为标准配置，○为选购配件
Note: ● Standard Outfit, ○ Optional

体视显微镜
Stereo Micro

宝石显微镜
Gem Micro

单筒连续变倍显微镜
Monocular Zoom Micro

金相显微镜
Metallurgical Micro

偏光显微镜
Polarizing Micro

便携式测量显微镜
Portable Measuring Micro

附件
Attachment

体视显微镜
Stereo Micro

宝石显微镜
Gem Micro

单筒连续变倍显微镜
Monocular Zoom Micro

金相显微镜
Metallurgical Micro

偏光显微镜
Polarizing Micro

便携式测量显微镜
Portable Measuring Micro

附件
Attachment

NJC-160系列工业检测显微镜 Metallurgical Microscope for Industrial Inspection NJC-160 Series

性能

- 超大移动范围的载物台设计，移动范围：10英寸(250mm)X10英寸(250mm)。
- 可供IT行业大面积集成电路、晶片的观察和检测，镜体结构舒适稳重，操作方式轻松快捷。
- 无限远光学系统，长工作距离高倍物镜（40X物镜工作距离2.9mm），提供了卓越的光学性能。
- 快速手推功能，可实现大距离快速到位。
- 粗微调低位前置操作，适合长时间轻松工作不疲劳。

Features

- Big Stage with Extra Large Moving Range 250X250mm.
- It is widely used in IT Industry for Large Area Integrate Circuit, Wafer Observation and Inspection.
- Excellent Optical Quality with Infinite Optical System and LWD High Magnification Objective(40X/WD2.9mm).
- Stage Speedy Movement by Hand to Get Observation Point Immediately.
- Comfortable and Enjoyable Operation with Low and Pre Position Control Knob.



配备偏光装置，适用不同标本观察
Suitable for different specimen observation with polarization attachment



超大移动范围载物台，快速手推和精细调节均可使用
Big stage with extra large moving range. Both speedy movement by hand and precise adjustment are available



NJC-160A

技术参数 Specification

| | | NJC-160A | NJC-160B |
|------------------------------|------------------------------------------------------------------------------------|----------|----------|
| 观察头 Viewing Head | 较镜式三目镜筒 Seidentopf type trinocular head | ● | ● |
| 目镜 Eyepiece | 超大视野目镜 EW10X/22 | ● | ● |
| | 2.5X/0.08"/-/- WD 11.7mm | ○ | ○ |
| | 2.5X/0.08"/-/- WD 10.7mm (A镜片) | ○ | ○ |
| | 4X/0.10"/-/- WD 17.8mm | ● | ● |
| | 5X/0.12"/-/- WD 15.5mm | ○ | ● |
| 物镜 Objective | 无限远平场消色差物镜 Infinite Plan Achromatic Objectives | ● | ● |
| | 10X/0.25"/-/- (BF/DF) WD 10.0mm | ● | ● |
| | 20X/0.40"/-/- WD 5.8mm | ● | ● |
| | 20X/0.40"/-/- (BF/DF) WD 4.30mm | ● | ● |
| | 40X/0.60"/-/- WD 2.90mm | ● | ● |
| | 50X/0.75"/-/- WD 0.32mm | ○ | ○ |
| | 100X/0.80"/-/- WD 2.00mm | ○ | ○ |
| 转换器 Nosepiece | 五孔转换器 Quintuple Nosepiece | ● | ● |
| 载物台 Stage | 载物台面积 300mmX268mm，移动范围 250mmX200mm Size 300mmX268mm, Movement range 250mmX200mm | ● | ● |
| 聚焦调节 Focusing | 同轴粗微调机构，行程 24mm Coaxial fine and coarse adjustment, Range 24mm | ● | ● |
| 照明系统 Illumination | 6V/20W 卤素灯，亮度可调 220V or 110V/6V/20W Halogen lamp, Brightness adjustable | ● | ● |
| | 24V/100W 卤素灯，亮度可调 24V/100W Halogen Lamp, Brightness adjustable | ● | ● |
| 偏光装置 Polarization Attachment | 检偏和起偏装置 Analyzer and Polarizer | ○ | ○ |
| 滤色镜 Filter | 蓝色、黄色、绿色、磨砂玻璃片 Blue, Green, Yellow, Ground glass | ● | ● |
| 摄影附件 Photo Attachment | | ○ | ○ |
| 摄像接口 Video Adapter | 标准 C 接口 C Mount | ○ | ○ |
| 摄像系统 Camera System | | ○ | ○ |
| 应用软件 Software | 图像处理软件 Image processing software | ○ | ○ |

注：●为标配，○为选购配件 Note: ● Standard Outfit, ○ Optional

NJF-120A金相显微镜 Metallurgical Microscope NJF-120A

性能

- 无限远平场光学系统，长工作距离物镜，提供卓越的光学性能。
- 超低位前置粗微动操作，减轻使用者疲劳，使人机关系更密切。
- 插拔式灯泡更换装置，更换灯泡更加便捷、安全、可靠。
- 可供观察和检测各种PCB线路板、LCD液晶显示板、金属金相组织，其舒适精致的镜体机构、轻松快捷的操作方式，是工矿企业工业光学检测仪器及学校金相教学用仪器的首选。

Features

- Excellent infinite Optical System.
- High Magnification Objective with Long Working Distance.
- Comfortable and Enjoyable Operation with low and Repetitive Position Control knob.
- Easy, Safe and Reliable Lamp Replacement Device.
- The Microscope is widely used for PCB board, LCD display and metal structure observation and inspection.
- With Ingenious stand and convenient operation, it will be your best choice.



NJF-120A

技术参数 Specification

| | | NJF-120A | NJL-120A |
|-----------------------|-----------------------------------------------------------------------------------------------------------------------------------------------------------------------------------------|----------|----------|
| 观察头 Viewing Head | 较镜式双目观察头 Seidentopf type binocular head | ● | ● |
| | 较镜式三目观察头 Seidentopf type trinocular head | ○ | ○ |
| 目镜 Eyepiece | WF10X/18 | ● | ● |
| | WFBX/18 | ○ | ○ |
| | WF10X/18, 带 0.1mm 刻尺及十字分划 | ○ | ○ |
| | WF10X/18 with 0.1mm Micrometer & cross hair | ○ | ○ |
| | WF12.5X/15 | ○ | ○ |
| 物镜 Objective | 无限远平场消色差物镜 Infinite Plan Achromatic Objectives | ● | ● |
| | 2.5X/0.08"/-/- WD 11.7mm | ○ | ○ |
| | 2.5X/0.08"/-/- WD 10.7mm (A镜片) | ○ | ○ |
| | 4X/0.11"/-/- WD17.3mm | ● | ● |
| | 5X/0.12"/-/- WD15.5mm | ○ | ○ |
| | 10X/0.25"/-/- WD10.0mm | ● | ● |
| | 20X/0.40"/-/- WD5.8mm | ● | ● |
| | 40X/0.60"/-/- WD2.90mm | ● | ● |
| | 50X/0.75"/-/- WD0.32mm | ○ | ○ |
| | 100X/0.80"/-/- WD2mm | ○ | ○ |
| 转换器 Nosepiece | 四孔转换器 Quadruple nosepiece | ● | ● |
| 载物台 Stage | 双层滑动平台，尺寸 150X140mm，移动范围 75X50mm Double layer mechanical stage 150X140mm/75X50mm | ● | ● |
| 调焦系统 Focusing | 同轴粗调焦机构 Coaxial fine & coarse adjustment | ● | ● |
| 照明 Illumination | 柯勒照明，垂直照明系统带孔径可变光栏和视场可变光栏；反射光照明，6V/20W 卤素灯，亮度可调 Kohler illumination, Epi-illuminator with its aperture diaphragm and its field diaphragm, 6V/20W Halogen lamp, Brightness adjustable | ● | ● |
| | 柯勒照明，垂直照明系统带孔径可变光栏和视场可变光栏；反射光照明，3W LED 照明，亮度可调 Kohler illumination, Epi-illuminator with its aperture diaphragm and its field diaphragm, 3W LED illumination, Brightness adjustable | ○ | ○ |
| | 透射光照明，6V/20W 卤素灯，亮度可调 Diascopic illumination, 6V/20W Halogen lamp, Brightness adjustable | ○ | ● |
| 滤色片 Filters | 蓝色、绿色、黄色、磨砂玻璃片 Blue, Green, Yellow & ground Glass | ● | ● |
| 偏光装置 Polarization Set | | ○ | ○ |
| 压平机 Specimen Presser | 金相试样的专用制作器械 For metallurgical specimen preparation | ○ | ○ |

注：●为标配，○为选购配件 Note: ● Standard Outfit, ○ Optional

NP-800RF/TRF系列偏光显微镜 Polarizing Microscope NP-800RF/TRF Series

性能 Features



带有0-90度可旋转的检偏器。推光观察装置可在正像镜检与推光镜检之间快速切换。干涉图像调节精确。快速。图像清晰。
Rotatable analyzer with graduation 0°-90°. Quickly switch between orthoscopic and conoscopic observation. Precisely and quickly interference images adjustment.



可调中心的五孔物镜转换器。
Center adjustable quintuple nosepiece.



高精度圆形旋转载物台。台面大。旋转方便。装有带式机械移动尺。能够控制样品的细微移动。
High-precision revolving round stage. Attachable mechanical stage. Make the sample move finely.



NP-800RF/TRF

技术参数 Specification

| | NP-800RF | NP-800TRF |
|--------------------------------------------------|------------------------------------------------------------------------------------------------------------------------------------------------------------------------------------------------------------------------------------------------------------------------------------|-----------|
| 光学系统 Optical System | 无限远光学系统 Infinite optical system | ● |
| 观察系统 Viewing Head | 双目式三目镜筒, 30°倾斜, 瞳距 48-75mm Sedentopif trinocular head inclined at 30°, interpupillary 48-75mm | ● |
| 目镜 Eyepiece | EW10X/22 平场目镜 Plan eyepiece EW10X/22 十字分划平场目镜, 十字平场目镜, 网格平场目镜 Plan eyepiece with scale of crosshair, Plan eyepiece with cross, Plan eyepiece with gridding | ● |
| 无应力平场消色差物镜 Strain-Free Plan Achromatic Objective | 5X/0.125/-0.17 WD 15.9mm 10X/0.25/-0.17 WD 10.9mm 20X/0.40/-0.17 WD 5.8mm 50X/0.75/-0.17 WD 0.32mm 100X/0.8/-0.17 WD 2mm 40X/0.65/-0.17 WD 0.54mm 100X/1.25/-0.17 WD 0.13mm | ● |
| 转换器 Nosepiece | 内式五孔转换器, 中心可调 Backward quintuple nosepiece, Center adjustable | ● |
| 检偏装置 Analyzer | 0°-360°转动式检偏器, 最小刻度 0.1° 360° dial rotation Minimum scale reading: 0.1° (Vernier scale) | ● |
| 推光观察装置 Conoscopic observation attachment | 正像镜检与推光镜检可切换, 可调焦 Switch between orthoscopic and conoscopic observation, Bertrand lens position adjustable | ● |
| 光程补偿器 Optical Compensator | A 试板 (一磁红), 1/4A 试板, 石英楔子试板 First-order red plate, Quarter-wave plate, Quartz wedge | ● |
| 圆形旋转载物台 Polarizing Rotatable Stage | 直径 Φ170mm, 中心可调, 360°刻度, 刻度格值 1°, 游标格值 6', 45°定位旋转 Diameter Φ170mm, Center adjustable, 360° scale, Minimum division 1°, Minimum reading 6' by means of vernier scale, 45° Click stop knob | ● |
| 移动尺 Attachable Stage | 移动范围 30mmX40mm Moving range 30mmX40mm | ○ |
| 聚光镜 Condenser | NA0.9/0.25 无应力摆出式聚光镜 Strain-free swing condenser NA0.9/0.25 同轴粗微调焦机构, 调焦范围 32mm, 微调格值 0.001mm, 粗动行程每圈 37.7mm, 微动行程每圈 0.1mm | ● |
| 调焦系统 Focusing | Coaxial coarse & fine adjustment, Range 32mm, Fine division 0.001mm, Coarse stroke 37.7mm per rotation, Fine stroke 0.1mm per rotation | ● |
| 起偏装置 Polarizer | 透射: 360°旋转, 0°位置可调整 Transmitted: 360° Rotatable 0° position adjustable 反射: 固定式 Reflected: Fixed | ● |
| 照明系统 Illumination | 24V/100W 卤素灯, 亮度可调节 24V/100W Halogen lamp, Brightness adjustable 反射照明 24V/100W 卤素灯, 亮度可调节 Reflected light: 24V/100W Halogen lamp, Brightness adjustable 透射照明 24V/100W 卤素灯, 亮度可调节 Transmitted light: 24V/100W Halogen lamp, Brightness adjustable | ● |
| 滤色片 Filter | Φ45mm 蓝色滤色片 Blue filter Φ45mm Φ45mm ND6 中性滤色片 ND6 Neutral density filter Φ45mm Φ45mm ND25 中性滤色片 ND25 Neutral density filter Φ45mm Φ25mm 蓝色滤色片 Blue filter Φ25mm Φ25mm ND6 中性滤色片 ND6 Neutral density filter Φ25mm Φ25mm ND25 中性滤色片 ND25 Neutral density filter Φ25mm | ● |
| 附件 Attachment | 摄像附件 Video attachment 0.01mm 测微尺 0.01mm Micrometer | ○ |

注: ●为标配, ○为选配件 Note: ● Standard Outfit, ○ Optional

NP-800M偏光显微镜 Polarizing Microscope NP-800M

性能

- 专用消应力物镜提供高清晰, 高反差的图像。
- 用于单偏光, 正像镜检, 推光镜检等多种观察。
- 透射, 反射, 透反射3种主要照明方式, 24V/100W长寿命卤素灯光源使用。
- 平台可45°定位, 并可装偏光专用大范围移动尺, 各倍率物镜转换时无干涉现象, 大幅提高工作效率。
- 专业偏光显微镜用于地质, 石油, 化工, 高分子, 液晶等领域。

Features

- Supply high quality and contrast image with special strain free objective.
- Single polarization, orthogonal polarization and conoscopic observation.
- Transmitted light and reflect light, 24V/100W long life halogen lamp.
- Stage with 45° located, attachable mechanical stage with large moving range, high efficiency by no interference when turning objectives.
- Professional polarizing microscope for geology, petroleum, chemicals, polymer, LED field.



NP-800M

技术参数 Specification

| | NP-800M |
|--------------------------------------------------|--------------------------------------------------------------------------------------------------------------------------------------------------------------------------------------------------------------------------------------------------------------|
| 光学系统 Optical System | 无限远光学系统 Infinite optical system |
| 观察系统 Viewing Head | 双目式三目镜筒, 30°倾斜, 瞳距 48-75mm Sedentopif trinocular head inclined at 30°, interpupillary 48-75mm |
| 目镜 Eyepiece | EW10X/22 平场目镜 Plan eyepiece EW10X/22 十字分划平场目镜, 十字平场目镜, 网格平场目镜 Plan eyepiece with scale of crosshair, Plan eyepiece with cross, Plan eyepiece with gridding |
| 无应力平场消色差物镜 Strain-Free Plan Achromatic Objective | 4X/0.10/-0.17 WD 17.3mm 10X/0.25/-0.17 WD 10.0mm 20X/0.40/-0.17 WD 5.10mm 40X/0.65/-0.17 WD 0.54mm 100X/1.25/-0.17 WD 0.13mm |
| 转换器 Nosepiece | 内式五孔转换器, 中心可调 Backward quintuple nosepiece, Center adjustable |
| 检偏装置 Analyzer | 0°-360°转动式检偏器, 最小刻度 0.1° 360° dial rotation Minimum scale reading: 0.1° (Vernier scale) |
| 推光观察装置 Conoscopic observation attachment | 正像镜检与推光镜检可切换, 可调焦 Switch between orthoscopic and conoscopic observation, Bertrand lens position adjustable |
| 光程补偿器 Optical Compensator | A 试板 (一磁红), 1/4A 试板, 石英楔子试板 First-order red plate, Quarter-wave plate, Quartz wedge |
| 圆形旋转载物台 Polarizing Rotatable Stage | 直径 Φ170mm, 中心可调, 360°刻度, 刻度格值 1°, 游标格值 6', 45°定位旋转 Diameter Φ170mm, Center adjustable, 360° scale, Minimum division 1°, Minimum reading 6' by means of vernier scale, 45° Click stop knob |
| 移动尺 Attachable Stage | 移动范围 30mmX40mm Moving range 30mmX40mm |
| 聚光镜 Condenser | NA0.9/0.25 无应力摆出式聚光镜 Strain-free swing condenser NA0.9/0.25 同轴粗微调焦机构, 调焦范围 32mm, 微调格值 0.001mm, 粗动行程每圈 37.7mm, 微动行程每圈 0.1mm |
| 调焦系统 Focusing | Coaxial coarse & fine adjustment, Range 32mm, Fine division 0.001mm, Coarse stroke 37.7mm per rotation, Fine stroke 0.1mm per rotation |
| 起偏装置 Polarizer | 360°旋转, 0°位置可调整 360° rotatable 0° position adjustable |
| 照明系统 Illumination | 24V/100W 卤素灯, 亮度可调节 24V/100W Halogen lamp, Brightness adjustable 反射照明 24V/100W 卤素灯, 亮度可调节 Reflected light: 24V/100W Halogen lamp, Brightness adjustable 透射照明 24V/100W 卤素灯, 亮度可调节 Transmitted light: 24V/100W Halogen lamp, Brightness adjustable |
| 滤色片 Filter | Φ45mm 蓝色滤色片 Blue filter Φ45mm Φ45mm ND6 中性滤色片 ND6 Neutral density filter Φ45mm Φ45mm ND25 中性滤色片 ND25 Neutral density filter Φ45mm |
| 附件 Attachment | 摄像附件 Video attachment 0.01mm 测微尺 0.01mm Micrometer |

注: ●为标配, ○为选配件 Note: ● Standard Outfit, ○ Optional

BM2100POL 系列偏光显微镜 Polarizing Microscope BM2100POL Series

性能

- 采用无限远平场光学系统。
- 广泛应用于地质学、矿物学以及化石燃料勘探等领域。
- 可实现单偏光、正交偏光、锥光等三种模式偏光观察。

Features

- Excellent Infinite Optical System.
- Widely used in geology, Mineralogy, Fossil fuel exploration.
- Single polarization, orthogonal polarization or conoscopic observation is available.



BM2100POL (T)

技术参数 Specification

| | BM2100POL (T) | BM2100POL (T/R) |
|--------------------------------------------------------------------------|------------------------------------------------------------------------------------------------------------------------------------------------------------------------------------------------------------------------------------------------------------------------------------------|------------------------------------------------------------------------------------------------------------------------------------------------------------------------------------------------------------------------------------------------------------------------------------------|
| 观察系统 Viewing Head | 双筒式双目观察头, 倾角 30° Siedentopf binocular viewing head, Inclined at 30° | 双筒式三目观察头, 倾角 30° Siedentopf trinocular viewing head, Inclined at 30° |
| 目镜 Eyepiece | WF10X/20 WF10X/20 十字目镜 Eye-piece WF10X/20 with cross hair WF10X/20 十字分划目镜 Eye-piece WF10X/20 with scale of cross hair 网格板 Grid plate | WF10X/20 WF10X/20 十字目镜 Eye-piece WF10X/20 with cross hair WF10X/20 十字分划目镜 Eye-piece WF10X/20 with scale of cross hair 网格板 Grid plate |
| 无限远平场平场 消色差物镜 Infinite Strain Free Plan Achromatic Objective | 透射/反射物镜: 4X, 10X Objective 4X, 10X for Transmitted / Reflected system 透射物镜: 20X, 40X, 60X Objective 20X, 40X, 60X for Transmitted system 透射物镜: 100X Objective 100X for Transmitted system 反射物镜: 20X, 40X, 60X, 100X Objective 20X, 40X, 60X, 100X for Reflected system | 透射/反射物镜: 4X, 10X Objective 4X, 10X for Transmitted / Reflected system 透射物镜: 20X, 40X, 60X Objective 20X, 40X, 60X for Transmitted system 透射物镜: 100X Objective 100X for Transmitted system 反射物镜: 20X, 40X, 60X, 100X Objective 20X, 40X, 60X, 100X for Reflected system |
| 转换器 Nosepiece | 内向外四孔转换器, 中心可调 (一孔固定, 三孔可调) Backward quadruple nosepiece, Center adjustable | 内向外四孔转换器, 中心可调 (一孔固定, 三孔可调) Backward quadruple nosepiece, Center adjustable |
| 垂直照明器 Epi-Illuminator | 12V/50W 卤素灯, 亮度可调, 可变孔径光阑/视场光阑 12V/50W Halogen lamp with iris aperture diaphragm and iris field diaphragm, Brightness adjustable | 12V/50W 卤素灯, 亮度可调, 可变孔径光阑/视场光阑 12V/50W Halogen lamp with iris aperture diaphragm and iris field diaphragm, Brightness adjustable |
| 极偏装置 Analyzer | 绿、灰蓝色片, 色温片和磨砂玻璃 Green, Gray filter and ground glass | 绿、灰蓝色片, 色温片和磨砂玻璃 Green, Gray filter and ground glass |
| 勃式镜 Bertrand Lens | 0°-360° 转动式勃式镜 Rotatable analyzer with gradation 0°-360° | 0°-360° 转动式勃式镜 Rotatable analyzer with gradation 0°-360° |
| 光程补偿器 Optical Compensator | 勃式镜, 可调中心, 可调焦, 可移出光路 Bertrand Lens, focus/center adjustable sliding in/out of optical path | 勃式镜, 可调中心, 可调焦, 可移出光路 Bertrand lens, Sliding in/out of optical path |
| 圆型旋转载物台 Revolving Round Stage | A 试板 (一级红), 1/4A 试板, 石英楔子试板 A Slip (first class red), 1/4A Slip, Quartz wedge | A 试板 (一级红), 1/4A 试板, 石英楔子试板 A Slip (first class red), 1/4A Slip, Quartz wedge |
| 聚光镜 Condenser | 直径 Φ160mm, 刻度格值 1°, 游标格值 6' Diameter Φ160mm, Graduated in 1° Increments, Minimum resolution 6' when using vernier scale | 直径 Φ160mm, 刻度格值 1°, 游标格值 6' Diameter Φ160mm, Graduated in 1° Increments, Minimum resolution 6' when using vernier scale |
| 聚焦调节 Focusing | NA0.9 阿贝式聚光镜带可变光阑 NA0.9 Abbe condenser with iris diaphragm | NA0.9 阿贝式聚光镜带可变光阑 NA0.9 Abbe condenser with iris diaphragm |
| 起偏装置 Polarizer | 同轴粗调机构, 调焦范围 24mm, 微调格值 0.002mm Coaxial coarse & fine adjustment, Range 24mm, Fine division 0.002mm | 同轴粗调机构, 调焦范围 24mm, 微调格值 0.002mm Coaxial coarse & fine adjustment, Range 24mm, Fine division 0.002mm |
| 照明系统 Illumination | 可 360° 转动, 带色温片 360° Rotatable with Filter | 可 360° 转动, 带色温片 360° Rotatable with Filter |
| 附件 Accessories | 12V/20W 卤素灯, 亮度可调节 (透射用) 12V/20W Halogen lamp, Brightness adjustable (Transmitted illumination) | 12V/20W 卤素灯, 亮度可调节 (透射用) 12V/20W Halogen Lamp, Brightness Adjustable (Transmitted illumination) |
| | 12V/50W 卤素灯, 亮度可调节 (反射用) 12V/50W Halogen lamp, Brightness adjustable (Reflected illumination) | 12V/50W 卤素灯, 亮度可调节 (反射用) 12V/50W Halogen lamp, Brightness adjustable (Reflected illumination) |
| | 照相附件 Photo Attachment | 照相附件 Photo Attachment |
| | 0.4X C 接口 C Mount 0.4X 2X 单反相机接口 2X SLR Camera adaptor | 0.4X C 接口 C Mount 0.4X 2X 单反相机接口 2X SLR Camera adaptor |
| | 机械移动尺, 移动范围: 30X40mm (含切片试片座) Mechanical stage, Moving rang 30X40mm | 机械移动尺, 移动范围: 30X40mm (含切片试片座) Mechanical stage, Moving rang 30X40mm |
| | 压平机 Specimen presser | 压平机 Specimen presser |
| | 测微尺 Micrometer | 测微尺 Micrometer |
| | 色温片 Filter | 色温片 Filter |

注: ●为标配, ○为选配件 Note: ● Standard Outfit, ○ Optional

XPL-2/XP-221偏光显微镜 Polarizing Microscope XPL-2/XP-221

性能

- 常规检测用透射/反射偏光显微镜
- 广泛应用于晶体学、地质学、分析化学、医学、生物科学、法医、环境科学、制药、毒理学、石棉分析等领域。
- 可以进行单偏光、正交偏光、锥光观察。

Features

- Polarizing microscope for normal inspection and education.
- Widely used in crystallography, Geology, Analytical chemistry, Medicine, Biology, Environmentalology, Pharmacy, Toxicology, Asbestos analysis and so on.
- Single polarization, Orthogonal polarization or conoscopic observation is available.



XPL-2

技术参数 Specification

| | XPL-2 | XP-221 |
|----------------------------------|-----------------------------------------------------------------------------------------------------------------------------------------------------------------------------------------------------------------------------------------------------------------------------------------------------------------------------------------------------------------------------------------------------|-----------------------------------------------------------------------------------------------------------------------------------------------------------------------------------------------------------------------------------------------------------------------------------------------------------------------------------------------------------------------------------------------------|
| 观察系统 Viewing Head | 平拉式双目观察头, 倾角 45° Sliding binocular viewing head, Inclined at 45° | 平拉式三目观察头, 倾角 45° Sliding trinocular viewing head, Inclined at 45° |
| 目镜 Eyepiece | WF10X/18 WF10X/18 十字目镜 Eye-piece WF10X/18 with cross hair 分划板 Reticule plate 网格板 Grid plate | WF10X/18 WF10X/18 十字目镜 Eye-piece WF10X/18 with cross hair 分划板 Reticule plate 网格板 Grid plate |
| 物镜 Objective | 无应力消色差物镜 4X/0.10, 10X/0.25/- Strain free achromatic objective 4X/0.10, 10X/0.25/- 无应力消色差物镜 25X/0.40/0.17, 40X/0.65/0.17, 63X/0.85/0.17 Strain free achromatic objective 25X/0.40/0.17, 40X/0.65/0.17, 63X/0.85/0.17 无应力平场消色差物镜 25X/0.40/0, 40X/0.65/0, 63X/0.85/0 Strain free plan achromatic objective 25X/0.40/0, 40X/0.65/0, 63X/0.85/0 灯室调校物镜 Lamp house adjustment objective | 无应力消色差物镜 4X/0.10, 10X/0.25/- Strain free achromatic objective 4X/0.10, 10X/0.25/- 无应力消色差物镜 25X/0.40/0.17, 40X/0.65/0.17, 63X/0.85/0.17 Strain free achromatic objective 25X/0.40/0.17, 40X/0.65/0.17, 63X/0.85/0.17 无应力平场消色差物镜 25X/0.40/0, 40X/0.65/0, 63X/0.85/0 Strain free plan achromatic objective 25X/0.40/0, 40X/0.65/0, 63X/0.85/0 灯室调校物镜 Lamp house adjustment objective |
| 转换器 Nosepiece | 内向外四孔转换器, 中心可调 Backward quadruple nosepiece, Center adjustable | 内向外四孔转换器, 中心可调 Backward quadruple nosepiece, Center adjustable |
| 极偏装置 Analyzer | 0°-90° 转动式极偏器 Rotatable analyzer with gradation 0°-90° | 0°-90° 转动式极偏器 Rotatable analyzer with gradation 0°-90° |
| 勃式镜 Bertrand Lens | 勃式镜, 可调中心, 可调焦, 可移出光路 Bertrand lens, Sliding in/out of optical path | 勃式镜, 可调中心, 可调焦, 可移出光路 Bertrand lens, Sliding in/out of optical path |
| 光程补偿器 Optical Compensator | A 试板 (一级红), 1/4A 试板, 石英楔子试板 A Slip (first class red), 1/4A Slip, Quartz wedge | A 试板 (一级红), 1/4A 试板, 石英楔子试板 A Slip (first class red), 1/4A Slip, Quartz wedge |
| 圆型旋转载物台 Revolving Round Stage | 直径 Φ160mm, 刻度格值 1°, 游标格值 6' Diameter Φ160mm, Graduated in 1° Increments, Minimum resolution 6' when using vernier scale | 直径 Φ160mm, 刻度格值 1°, 游标格值 6' Diameter Φ160mm, Graduated in 1° Increments, Minimum resolution 6' when using vernier scale |
| 聚光镜 Condenser | NA1.25 阿贝式聚光镜带可变光阑和滤色片 NA1.25 Abbe condenser with iris diaphragm & filter | NA1.25 阿贝式聚光镜带可变光阑和滤色片 NA1.25 Abbe condenser with iris diaphragm & filter |
| 聚焦调节 Focusing | 同轴粗调机构, 调焦范围 26mm, 微调格值 0.002mm Coaxial coarse & fine adjustment, Range 26mm, Fine division 0.002mm | 同轴粗调机构, 调焦范围 26mm, 微调格值 0.002mm Coaxial coarse & fine adjustment, Range 26mm, Fine division 0.002mm |
| 起偏装置 Polarizer | 起偏镜, 可 360° 转动 Polarizer, 360° Rotatable | 起偏镜, 可 360° 转动 Polarizer, 360° Rotatable |
| 照明系统 Illumination | 12V/20W 卤素灯, 亮度可调节 (透射用) 12V/20W Halogen Lamp, Brightness Adjustable (Transmitted illumination) | 12V/20W 卤素灯, 亮度可调节 (透射用) 12V/20W Halogen Lamp, Brightness Adjustable (Transmitted illumination) |
| | 12V/50W 卤素灯, 亮度可调节 (反射用) 12V/50W Halogen lamp, Brightness adjustable (Reflected illumination) | 12V/50W 卤素灯, 亮度可调节 (反射用) 12V/50W Halogen lamp, Brightness adjustable (Reflected illumination) |
| 附件 Accessories | 照相附件 Photo Attachment | 照相附件 Photo Attachment |
| | 0.4X C 接口 C Mount 0.4X 2X 单反相机接口 2X SLR Camera adaptor | 0.4X C 接口 C Mount 0.4X 2X 单反相机接口 2X SLR Camera adaptor |
| | 机械移动尺, 移动范围: 30X40mm (含切片试片座) Mechanical stage, Moving rang 30X40mm | 机械移动尺, 移动范围: 30X40mm (含切片试片座) Mechanical stage, Moving rang 30X40mm |
| | 压平机 Specimen presser | 压平机 Specimen presser |
| | 测微尺 Micrometer | 测微尺 Micrometer |

注: ●为标配, ○为选配件 Note: ● Standard Outfit, ○ Optional

XP-213 偏光显微镜 Polarizing Microscope XP-213

性能

- 常规检测及教学用透射偏光显微镜。
- 广泛应用于晶体学、分析化学、医学、生物科学、环境科学、制药、毒理学等领域。
- 无论是单偏光、正交偏光还是锥光观察，都可以提供清晰、锐利的图像。

Features

- Polarizing microscope for normal inspection and education.
- Widely used in crystallography, Analytical chemistry, Medicine, Biology, Environmentalology, Pharmacy, Toxicology and so on.
- Supply sharp and clear images by single polarization, orthogonal polarization or conoscopic observation.



XP-213

技术参数 Specification

| | | XP-213 |
|----------------------------------|-------------------------------------------------------------------------------------------------------------------------------------|------------------|
| 观察系统 Viewing Head | 平拉式双目观察头，倾角 30° Sliding binocular viewing head, Inclined at 30° 平拉式三目观察头，倾角 45° Sliding trinocular viewing head, Inclined at 45° | ● ○ |
| 目镜 Eyepiece | WF10X/18 WF10X/18 十字目镜 Eyepiece WF10X/18 with cross hair 分划板 Reticle plate 网格板 Grid plate | ● ● ● ● |
| 物镜 Objective | 无应力消色差物镜 4X、10X、25X、40X、63X Strain free achromatic objective 4X, 10X, 25X, 40X, 63X 灯室调校物镜 Lamp house adjustment objective | ● ● ○ |
| 转换器 Nosepiece | 内向外四孔转换器，中心可调 Backward quadruple nosepiece, Center adjustable | ● |
| 检偏装置 Analyzer | 0°-90°转动式检偏器 Rotatable analyzer with gradation 0°-90° | ● |
| 勃式镜 Bertrand Lens | 勃式镜，可调中心，可调焦，可移出光路 Bertrand lens, Sliding in/out of optical path | ● |
| 光程补偿器 Optical Compensator | λ 试板（一级红），1/4λ 试板，石英楔子试板 λ Slip (First class red), 1/4λ Slip, Quartz wedge | ● |
| 圆形旋转载物台 Revolving Round Stage | 直径 Φ160mm，刻度格值 1°，游标格值 6' Diameter Φ160mm, Graduated in 1° increments, Minimum resolution 6' when using vernier scale | ● |
| 聚光镜 Condenser | NA1.25 阿贝式聚光镜带可变光栏和滤色片 NA1.25 Abbe condenser with iris diaphragm & filter | ● |
| 焦距调节 Focusing | 同轴粗调调焦机构，调焦范围 26mm，微调格值 0.002mm Coaxial coarse & fine adjustment, Range 26mm, Fine division 0.002mm | ● |
| 起偏装置 Polarizer | 可 360° 转动 360° Rotatable | ● |
| 照明系统 Illumination | 6V/20W 卤素灯，亮度可调节（透射用） 6V/20W Halogen lamp, Brightness adjustable (Transmitted illumination) | ● |
| 附件 Accessories | 机械移动尺，移动范围，30X40mm（含切片试片座） Mechanical stage, Moving rang 30X40mm 压平机 Specimen presser 测微尺 Micrometer 蓝色滤色片 Blue filter | ○ ● ● ● |

注：●为标准配置，○为选购配件 Note: ● Standard Outfit, ○ Optional

NPL-400 偏光显微镜 Polarizing Microscope NPL-400 Series

性能

流线型、高稳定性的镜体设计，使用方便，功能齐全，适合于在单偏光、正交偏光及锥光下观察矿物的晶体形状、颜色、干涉色等，并准确地鉴定各种矿物或其他晶体试样的光学性质。

Features

With the features of streamline and stable frame, easy operation and complete functions, polarizing microscope NPL-400 is the best choice for user to observe mineral crystal figure, color and interference color and also exactly identify the optical performance of mineral and other crystal specimen.



0°-90° 转动式检偏器，可摆出光路进行单偏光观察，并配有 λ 试板，1/4λ 试板及石英楔子试板。
0°-90° Rotatable Analyzer and when out of optical path, Single Polarizing Observation is Available. λ Slip, 1/4λ Slip and Quartz Wedge are Equipped.



四孔转换器，中心可调
Quadruple Nosepiece, Center Adjustable



起偏器可摆出光路；6V/20W 卤素灯照明，可调节亮度以及观察不同偏光下的标本。
Polarizer can be swung out of Optical Path. 6V/20W Halogen Lamp Illumination, Brightness Adjustable.



可配置三目观察系统
Trinocular Observing is Available



NPL-400B

技术参数 Specification

| | | NPL-400B | NPL-400T |
|----------------------------------|---------------------------------------------------------------------------------------------------------------------------------------------------------------------|----------|----------|
| 观察系统 Viewing Head | 铰链式双目镜筒，30° 倾斜，360° 旋转 Seidentopf typy binocular head at 30°, 360° Rotatable 铰链式三目镜筒，30° 倾斜，360° 旋转 Seidentopf typy trinocular head at 30°, 360° Rotatable | ● | ● |
| 目镜 Eyepiece | WF10X/18 带十字分划 Eyepiece WF10X/18 with scale of crosshair | ● | ● |
| 物镜 Objective | 无应力消色差物镜 4X、10X、40X、60X Strain free achromatic objective 4X, 10X, 40X, 60X | ● | ● |
| 转换器 Nosepiece | 内向外四孔转换器，中心可调 Backward quadruple nosepiece, Center adjustable | ● | ● |
| 检偏装置 Analyzer | 0°-90° 转动式检偏器 Rotatable analyzer with gradation 0°-90° | ● | ● |
| 勃式镜 Bertrand Lens | 勃式镜，可移出光路 Bertrand lens, Sliding in/out of optical path | ● | ● |
| 光程补偿器 Optical Compensator | λ 试板（一级红），1/4λ 试板，石英楔子试板 λ Slip (first class red), 1/4λ Slip, Quartz wedge | ● | ● |
| 圆形旋转载物台 Revolving Round Stage | 直径 Φ160mm，刻度格值 1°，游标格值 6' Diameter Φ160mm, Graduated in 1° increments, Minimum resolution 6' when using vernier scale | ● | ● |
| 聚光镜 Condenser | NA1.25 阿贝式聚光镜带可变光栏和滤色片 NA1.25 Abbe condenser with iris diaphragm & Filter | ● | ● |
| 焦距调节 Focusing | 同轴粗调调焦机构，调焦范围 26mm，微调格值 0.002mm Coaxial coarse & fine adjustment, Range 26mm, Fine division 0.002mm | ● | ● |
| 起偏装置 Polarizer | 可摆出光路，位于集光镜顶部 Sliding in/ out of optical path, Located on the top of collector | ● | ● |
| 照明系统 Illumination | 6V/20W 卤素灯，亮度可调节 6V/20W Halogen lamp, Brightness adjustable | ● | ● |

注：●为标准配置，○为选购配件 Note: ● Standard Outfit, ○ Optional

NPL-107 系列偏光显微镜 Polarizing Microscope NPL-107 Series

性能

使用方便、功能齐全、经济实用。广泛应用于地质、石油、煤炭、化工、医疗、药品等领域的检验及高等院校相关专业的教学、科研工作。

Features

With the features of easy operation, complete functions and economy, it is an ideal instrument in geology, petroleum, coal, chemicals and physic fields. It is also widely used in academic demonstration and scientific research.



NPL-107B

技术参数 Specification

| | | NPL-107B | NPL-107T |
|----------------------------------|----------------------------------------------------------------------------------------------------------------------------|----------|----------|
| 观察系统 Viewing Head | 平移式双目镜筒, 45°倾斜, 360°旋转 Sliding binocular head at 45°, 360° Rotatable | ● | |
| 目镜 Eyepiece | WF10X/18 带十字分划 Eyepiece WF10X/ 18 with scale of crosshair | ● | ● |
| 物镜 Objective | 无应力消色差物镜 4X、10X、40X Strain free achromatic objective 4X, 10X, 40X | ● | ● |
| 转换器 Nosepiece | 四孔转换器, 中心可调 Quadruple nosepiece, Center adjustable | ● | ● |
| 检偏装置 Analyzer | 0°-90°转动式检偏器 Rotatable analyzer with gradation 0°-90° | ● | ● |
| 勃氏镜 Bertrand Lens | 勃氏镜可移出光路 Bertrand lens, Sliding in/ out of optical path | ● | ● |
| 光程补偿器 Optical Compensator | λ试板 (一级红) λ Slip (First class red) 1/4λ 试板 1/ 4λ Slip | ● | ● |
| 圆型旋转载物台 Revolving Round Stage | 直径 Φ160mm, 刻度格值 1°, 游标格值 6' Diameter Φ160mm, Graduated in 1° increments, Minimum resolution 6' when using vernier scale | ● | ● |
| 聚光镜 Condenser | NA1.25 阿贝式聚光镜带可变光栏和滤色片 Abbe Condenser with iris diaphragm & filter | ● | ● |
| 焦距调节 Focusing | 同轴粗微调焦机构, 调焦范围 28mm, 微调格值 0.002mm Coaxial coarse & fine adjustment, Range 28mm, Fine division 0.002mm | ● | ● |
| 起偏装置 Polarizer | 可摆出光路, 位于集光镜顶部 Sliding in/ out of optical path, Located on the top of collector | ● | ● |
| 照明系统 Illumination | 6V/20W 卤素灯, 亮度可调节 6V/ 20W Halogen lamp, Brightness adjustable | ● | ● |

注: ●为标配, ○为选配件 Note: ● Standard Outfit, ○ Optional

NP-400 偏光显微镜 Polarizing Microscope NP-400 Series

性能

NP-400型偏光显微镜, 可以在单偏光、正交偏光及锥光下观察矿物的晶体形状、颜色、干涉色等, 并准确地鉴定各种矿物或其他试样薄片的光学性质。该产品使用方便, 功能齐全, 广泛应用于地质、石油、煤炭、化工的化学纤维、医疗、药品等领域的检验及高等院校相关专业的教学、科研工作。

Features

Polarizing microscope NP-400 can observe mineral crystal figure, color and interference color and also identify its optical performance. It is a good microscope used in geology, petroleum, coal, Chemical fiber, medical treatment and physic inspection. It is also widely used in academic demonstration and research.



0°-90° 滑动式检偏器, 可摆出光路进行单偏光观察, 并配有 λ 试板、1/4λ 试板及石英楔子试板。
0°-90° Rotatable Analyzer and when out of optical path, Single Polarizing Observation is Available. λ Slip, 1/4λ Slip and Quartz Wedge are Equipped.



圆型旋转载物台, 直径 Φ145mm, 360°等分刻度, 游标格值 6'
Revolving round stage Φ145mm, 360° rotatable and graduated in 1° increments, minimum resolution 6', when using vernier scale



起偏器可摆出光路; 6V/20W 卤素灯照明, 可调节亮度以及观察不同偏光下的标本。
Polarizer can be Swung out of Optical Path, 6V/ 20W Halogen Lamp Illumination, Brightness Adjustable.



NP-400B

技术参数 Specification

| | | NP-400M | NP-400B | NP-400T |
|----------------------------------|----------------------------------------------------------------------------------------------------------------------------------------------------------------------------------------|---------|---------|---------|
| 观察系统 Viewing Head | 单目镜筒, 30°倾斜 Monocular head inclined at 30° 铰链式双目镜筒, 30°倾斜 Seidentopf type binocular head inclined at 30° 铰链式三目镜筒, 30°倾斜 Seidentopf type trinocular head inclined at 30° | ● | | |
| 目镜 Eyepiece | WF10X/18 带十字分划 Eyepiece WF10X/18 with scale of crosshair WF10X/18 | ● | ● | ● |
| 物镜 Objective | 无应力消色差物镜 4X、10X、40X、60X Strain free achromatic objective 4X, 10X, 40X, 60x | ● | ● | ● |
| 转换器 Nosepiece | 内向式四孔转换器 Backward quadruple nosepiece | ● | ● | ● |
| 检偏装置 Analyzer | 0°-90°转动式检偏器 Rotatable analyzer with gradation 0°-90° | ● | ● | ● |
| 勃氏镜 Bertrand Lens | 勃氏镜, 可移出光路 Bertrand lens, sliding in/out of optical path | ● | ● | ● |
| 光程补偿器 Optical Compensator | λ 试板 (一级红), 1/4λ 试板, 石英楔子试板 λ Slip (first class red), 1/4λ Slip quartz wedge | ● | ● | ● |
| 圆型旋转载物台 Revolving Round Stage | 直径 Φ145mm, 360°等分刻度, 游标格值 6', 中心可调 Diameter Φ145mm, 360° rotatable and graduated in 1° increments, minimum resolution 6' when using vernier scale, center adjustable | ● | ● | ● |
| 聚光镜 Condenser | NA1.25 阿贝式聚光镜带可变光栏和滤色片 Abbe condenser NA1.25 with iris diaphragm & filter | ● | ● | ● |
| 焦距调节 Focusing | 同轴粗微调焦机构, 调焦范围 28mm, 微调格值 0.002mm Coaxial coarse & fine adjustment, range 28mm, fine division 0.002 | ● | ● | ● |
| 起偏装置 Polarizer | 可摆出光路, 位于集光镜顶部 Sliding in/out of optical path, located on the top of collector | ● | ● | ● |
| 照明系统 Illumination | 6V/20W 卤素灯, 亮度可调节 6V/ 20W Halogen lamp, brightness adjustable | ● | ● | ● |

注: ●为标配, ○为选配件 Note: ● Standard Outfit, ○ Optional

体视显微镜
Stereo Micro

宝石显微镜
Gem Micro

单筒连续变倍显微镜
Monocular Zoom Micro

金相显微镜
Metallographical Micro

偏光显微镜
Polarizing Micro

便携式测量显微镜
Portable Measuring Micro

附件
Attachment

体视显微镜
Stereo Micro

宝石显微镜
Gem Micro

单筒连续变倍显微镜
Monocular Zoom Micro

金相显微镜
Metallographical Micro

偏光显微镜
Polarizing Micro

便携式测量显微镜
Portable Measuring Micro

附件
Attachment

NP-107系列偏光显微镜 Polarizing Microscope NP-107 Series

性能

使用方便、功能齐全，经济实用。广泛应用于地质、石油、煤炭、化工、医疗、药品等领域地检验及高等院校相关专业地教学、科研工作。

Features

With the features of easy operation, complete functions and economy, it is ideal instrument in geology, petroleum, coal, chemicals and physic fields. It is also widely used in academic demonstration and research.



NP-107A

技术参数 Specification

| | | NP-107A | NP-107M | NP-107B | NP-107T |
|----------------------------------|----------------------------------------------------------------------------------------------------------------------------------------------------------------|---------|---------|---------|---------|
| 观察系统 Viewing Head | 单目镜筒, 45°倾斜 Monocular head inclined at 45° | ● | ● | | |
| | 平移式双目镜筒, 45°倾斜 Sliding binocular head inclined at 45° | | | ● | |
| 目镜 Eyepiece | 平移式三目镜筒, 45°倾斜 Sliding trinocular head inclined at 45° | | | ● | ● |
| | WF10X/18 带十字分划 Eyepiece WF10X/18 with scale of crosshair | ● | ● | ● | ● |
| 物镜 Objective | 无应力消色差物镜 4X、10X、40X | ● | ● | ● | ● |
| | Strain free achromatic objective 4X、10X、40X | ● | ● | ● | ● |
| 转换器 Nosepiece | 外向式四孔转换器 Toward quadruple nosepiece | ● | ● | ● | ● |
| 检偏装置 Analyzer | 固定式检偏装置 Fixed analyzer | ● | | | |
| | 0°-90°摆动式检偏装置 Rotatable analyzer with graduation 0°-90° | | ● | ● | ● |
| 勃氏镜 Bertrand Lens | 勃氏镜可移出光路 | ● | ● | ● | ● |
| | Bertrand lens, Sliding in/ out of optical path | ● | ● | ● | ● |
| 光程补偿镜 Optical Compensator | λ试板 (一级红) λ Slip (First class red) | ● | ● | ● | ● |
| | 1/4λ试板 1/4λ Slip | ● | ● | ● | ● |
| 圆锥旋转载物台 Revolving Round Stage | 石英楔子试板 Quartz wedge | ● | ● | ● | ● |
| | 直径φ135mm, 刻度格值1°, 游标格值6', 中心可调 Diameterφ135mm, 360°Rotatable and graduate in 1°increments, Minimum resolution 6'when using vernier scale, Center adjustable | ● | ● | ● | ● |
| 聚光镜 Condenser | NA1.25 阿贝式聚光镜带可变光栏和滤色片 Abbe Condenser NA1.25 with Iris diaphragm & filter | ● | ● | ● | ● |
| | 同轴粗微调焦机构, 调焦范围28mm, 微调格值0.002mm Coaxial coarse & fine adjustment, range 28mm, fine division 0.002 | ● | ● | ● | ● |
| 起偏装置 Polarizer | 推进式, 可0°-90°偏振方向转动, 位于集光镜顶部 0°-90° Rotatable located on the top of collector | ● | | | |
| | 可摆出光路, 位于集光镜顶部 Sliding in/out of optical path, Located on the top of collector | | ● | ● | ● |
| 照明系统 Illumination | 6V/20W 卤素灯, 亮度可调节 6V/20W Halogen lamp, Brightness adjustable | ● | ● | ● | ● |

注: ●为标准配置, ○为选购配件 Note: ●Standard Outfit, ○Optional

XC系列便携式测量显微镜 Portable Measuring Microscope XC Series

性能

便携式测量显微镜能广泛应用于工厂生产现场的检测测量和实验室的观察研究, 尤其适用于机械制造业, 纸张制造业, 印刷业, 纺织业等的生产现场检查。该产品体积小, 重量轻, 造型新颖, 操作简便, 也可供学生实验使用。

Features

The portable measuring microscope is used for measuring or viewing purposes in production or laboratory. It is particularly suitable for spot examination of machinery industry, paper making, print and textile, etc. The product features small size, light weight, nice design and easy operation. It is also suitable to be used by students.



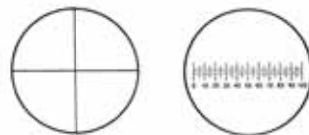
XC-100, XC-100L
XC-50, XC-50L
XC-40, XC-40L
XC-20, XC-20L

| | XC-100 (L) | XC-50 (L) | XC-40 (L) | XC-20 (L) |
|----------------------------------------------|---------------------------------------|-----------|-----------|-----------|
| 总放大倍率 Total Magnification | 100× | 50× | 40× | 20× |
| 机械筒长 Mechanical Tube Length | 160mm | | | |
| 目镜 Eyepiece | 10× | | | |
| 物镜 Objective | 10× | 5× | 4× | 2× |
| 数值孔径 Numerical Aperture | 0.25 | 0.12 | 0.1 | 0.05 |
| 目镜视场直径 Diameter of Viewing field in Eyepiece | Φ18mm | | | |
| 目镜分划板 Reticule of Eyepiece | 0.1mm | | | |
| 格值 Minimum Readable Division | 0.01mm | 0.02mm | 0.025mm | 0.05mm |
| 工作距离 Working Distance | 6.93mm | 17.6mm | 18mm | 17.2mm |
| 调焦范围 Focus Range | 30mm | | | |
| 底座直径 Diameter of Bearing Plane | Φ63mm | | | |
| 整机高度 Height of Microscope | 210mm | | | |
| 整机重量 Mass of Microscope | 650g | | | |
| 照明光源 Illumination | 笔灯, 使用二节7号干电池 Pen light, No.2 battery | | | |

不同形式的目镜分划板, 适用于不同场合的需求
Various of Reticules for Eyepiece to Meet Different Requirements



带程度调节的10X分划目镜
10X Eyepiece with reticule and diopter adjustment



体视显微镜附件 Stereo Microscope Accessories

体视显微镜机架 Stands of Stereo Microscope



万能机架 Universal table stand



以下三种机架仅限中国地区销售
These three stands only sold in China

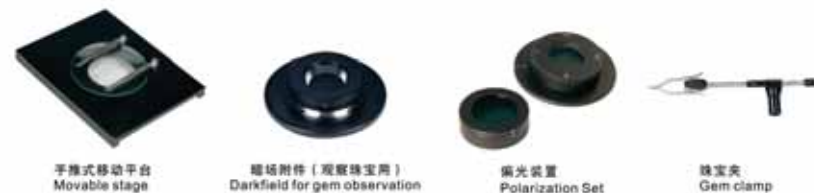


屏显仪 Gem Accessory



- * 7"液晶屏
- * 40万像素摄像系统
- * 标准23.2mm接口即插即用
- * 7" LED Screen
- * Digital camera with resolution of 0.4MP
- * Φ23.2mm Adapter

珠宝附件 Gem Accessory



斜照明光源



环形照明光源 Annular Illuminator

